

DISASSEMBLY/ASSEMBLY

Precautions Before Disassembling Parts

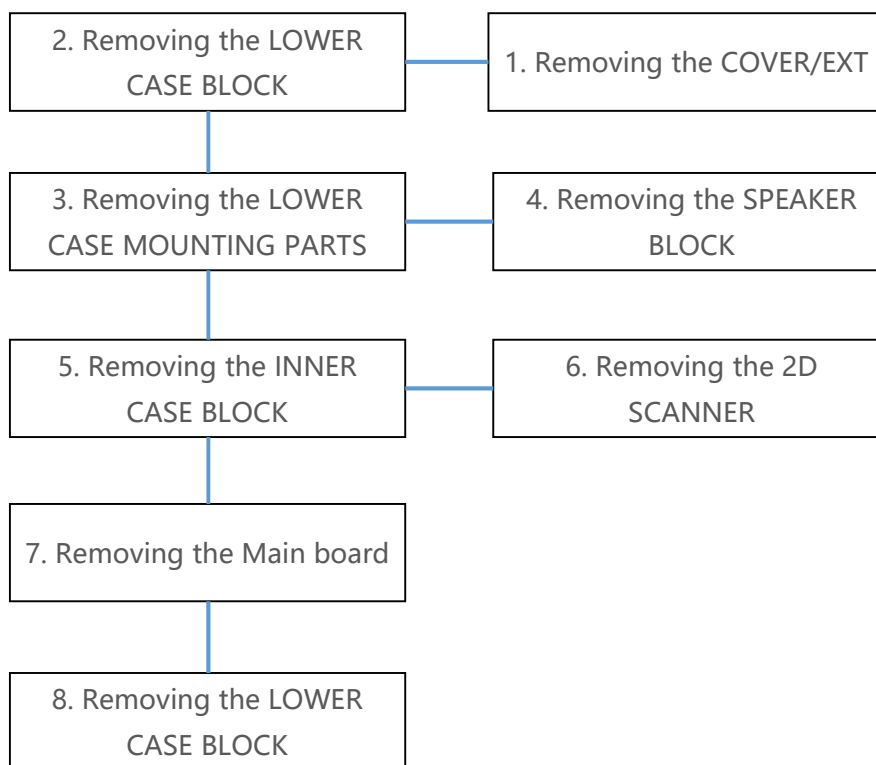
- When reassembling the parts, reverse the disassembly procedures.
If [Note on reassembling] is stated, be sure to follow it.
- Use the right screwdriver according to the screw diameter.
- When disassembling or reassembling parts, do not pinch or damage wires.
- When reassembling FPC (cable), be sure that its orientation is correct.
The contacts of the FPC are on one side only.
- Adhesive tape is not reusable. Use the new one.

Tool list

The following tools are necessary when replacing maintenance parts.

No.	Item
1	#1 precision screwdriver (Phillips head)
2	Special screwdriver (Tri-wing head)
3	Tweezers

Flow



1. Removing the COVER/EXT

Use a #1 precision screwdriver to remove the screws shown in S1 below.

IT-G600-C21
IT-G600-WC21
IT-G600-WC01



IT-G600-C31
IT-G600-WC31



2. Removing the LOWER CASE BLOCK

Turn the terminal over, turn the left and right battery pack cover lock switches to the “FREE” position and remove the battery pack cover.

Remove the microSD Card and rechargeable battery.

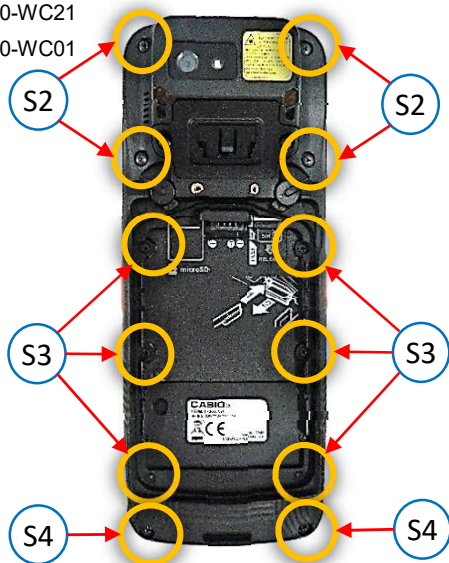
IT-G600-C21
IT-G600-WC21
IT-G600-WC01

IT-G600-C31
IT-G600-WC31

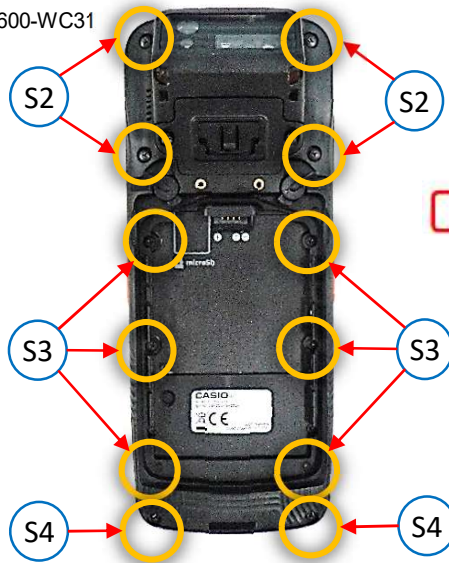


Use a Special screwdriver (Tri-wing head) to remove the screws shown in S2 below.
 Use a Special #1 precision screwdriver to remove the screws shown in S3 and S4 below.

IT-G600-C21
 IT-G600-WC21
 IT-G600-WC01



IT-G600-C31
 IT-G600-WC31

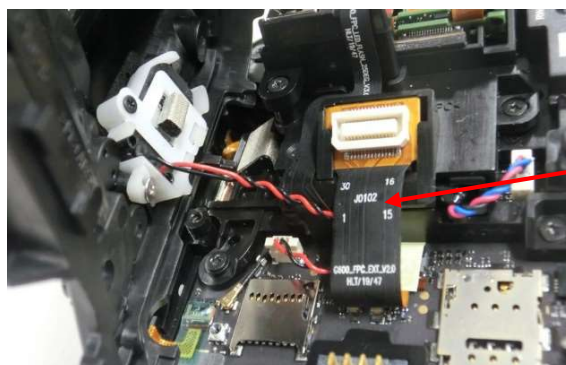


Remove the cable connector and remove the lower case.

* Do not raise the lower case directly.

Be sure to remove it from the side of the volume key.

***Note that cable is connected (red circle in the figure below)**



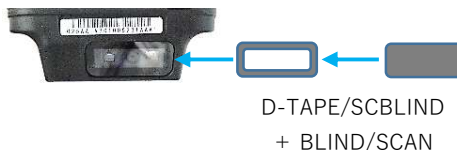
***When assembling, pass the cable under the FPC.**

3. Removing the LOWER CASE MOUNTING PARTS

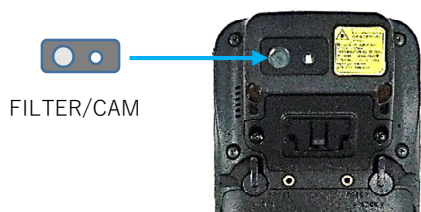
IT-G600-C21
IT-G600-WC21



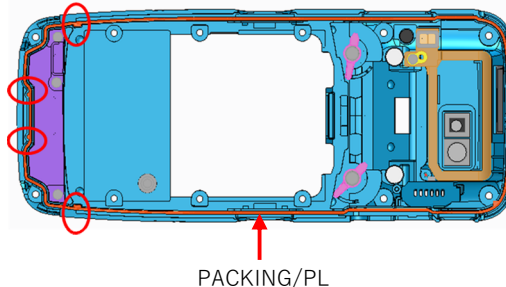
IT-G600-WC01



IT-G600-C21
IT-G600-WC21
IT-G600-WC01

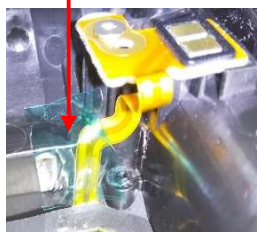


*Insert the convex parts of the packing into the respective slits in the case to secure them.



TAPE-B/CONNECTOR

*Paste at the position of the photo



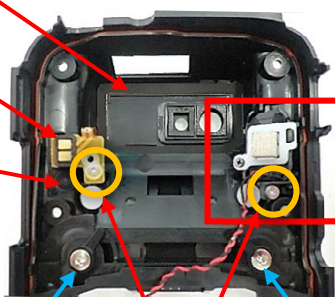
FPC/NFCANT25

SHEET/NFC POGO

*Don't ride on the pad

FILTER/MIC

SPEAKER BLOCK



SCREW

SCREW

HOOK-L/BATTERY

HOOK-R/BATTERY

SCREW

RING/LOCK/BATTERY

LOCK/BATTERY

LOCK/BATTERY

RING/LOCK/BATTERY

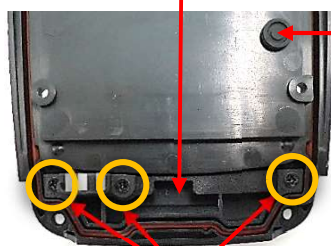
*The number of dot marks of the cover lock switch should be the same as that on the case side.



Use a #1 precision screwdriver to remove the screws shown below.

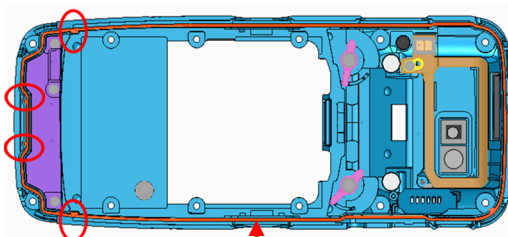
ANTENNA/MAIN or
ANTENNA/MAIN/DUMMY

COVER/RESET



SCREW

IT-G600-C31
IT-G600-WC31

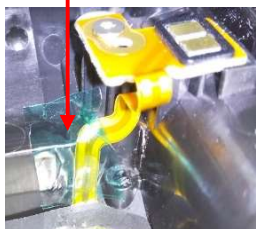


PACKING/PL

*Insert the convex parts of the packing into the respective slits in the case to secure them.

TAPE-B/CONNECTOR

*Paste at the position of the photo



FPC/NFCANT25

*Paste at the position of the photo

SHEET/NFC POGO

*Don't ride on the pad

FILTER/MIC

SPEAKER BLOCK

SCREW

SCREW

HOOK-L/BATTERY

HOOK-R/BATTERY

SCREW

RING/LOCK/BATTERY

LOCK/BATTERY

LOCK/BATTERY

RING/LOCK/BATTERY

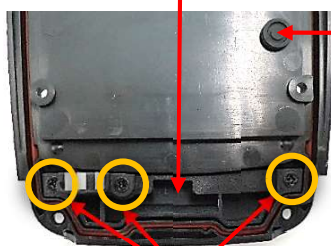
*The number of dot marks of the cover lock switch should be the same as that on the case side.



Use a #1 precision screwdriver to remove the screws shown below.

ANTENNA/MAIN or
ANTENNA/MAIN/DUMMY

COVER/RESET

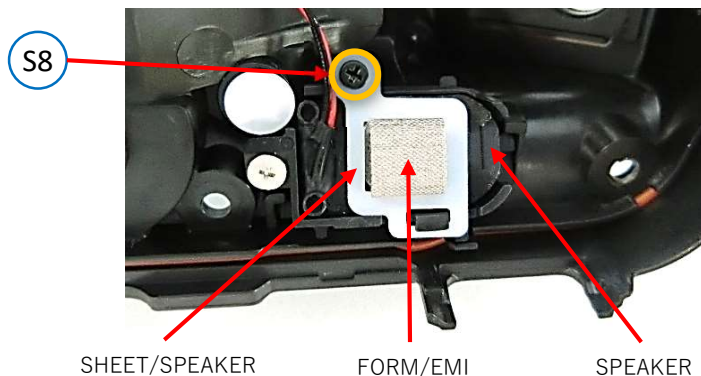


SCREW

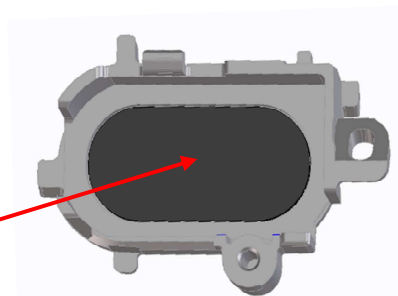
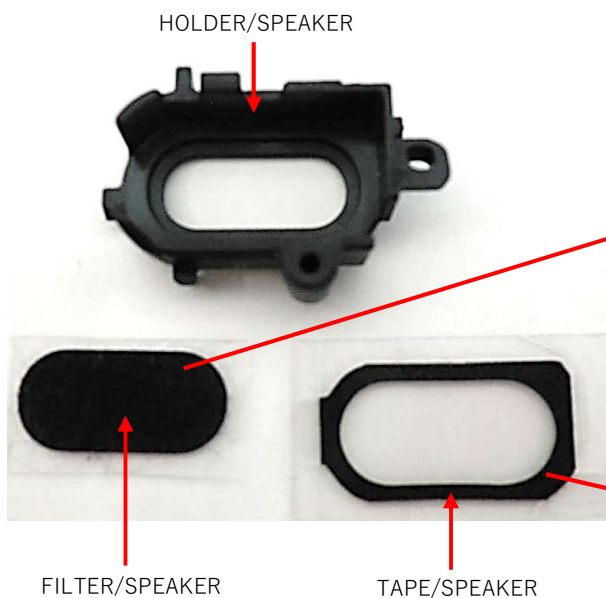
4. Removing the SPEAKER BLOCK

IT-G600-C21
 IT-G600-WC21
 IT-G600-WC01
 IT-G600-C31
 IT-G600-WC31

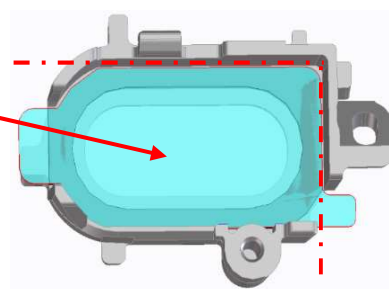
Use a #1 precision screwdriver to remove the screws shown below.
 Remove the SHEET/SPEAKER and remove the speaker.
 Attach the FORM/EMI to the center of the hole in the SHEET/SPEAKER.



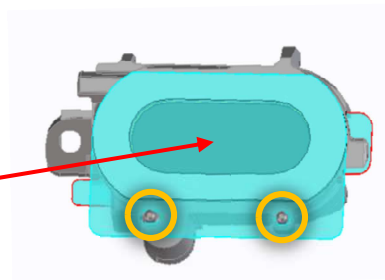
Assembling the speaker holder



Paste FILTER/SPEAKER on HOLDER/SPEAKER



Paste TAPE/SPEAKER on HOLDER/SPEAKER



Paste D-TAPE/SPEAKER on HOLDER/SPEAKER

D-TAPE/SPEAKER

5. Removing the INNER CASE BLOCK

IT-G600-C21

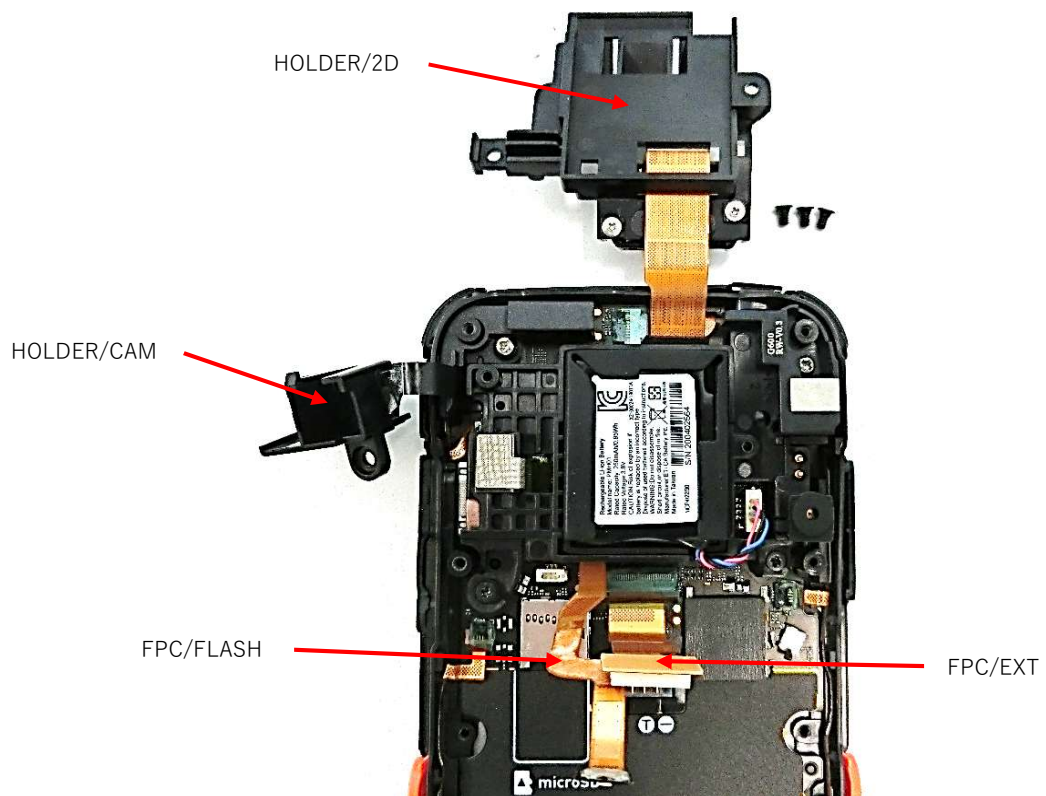
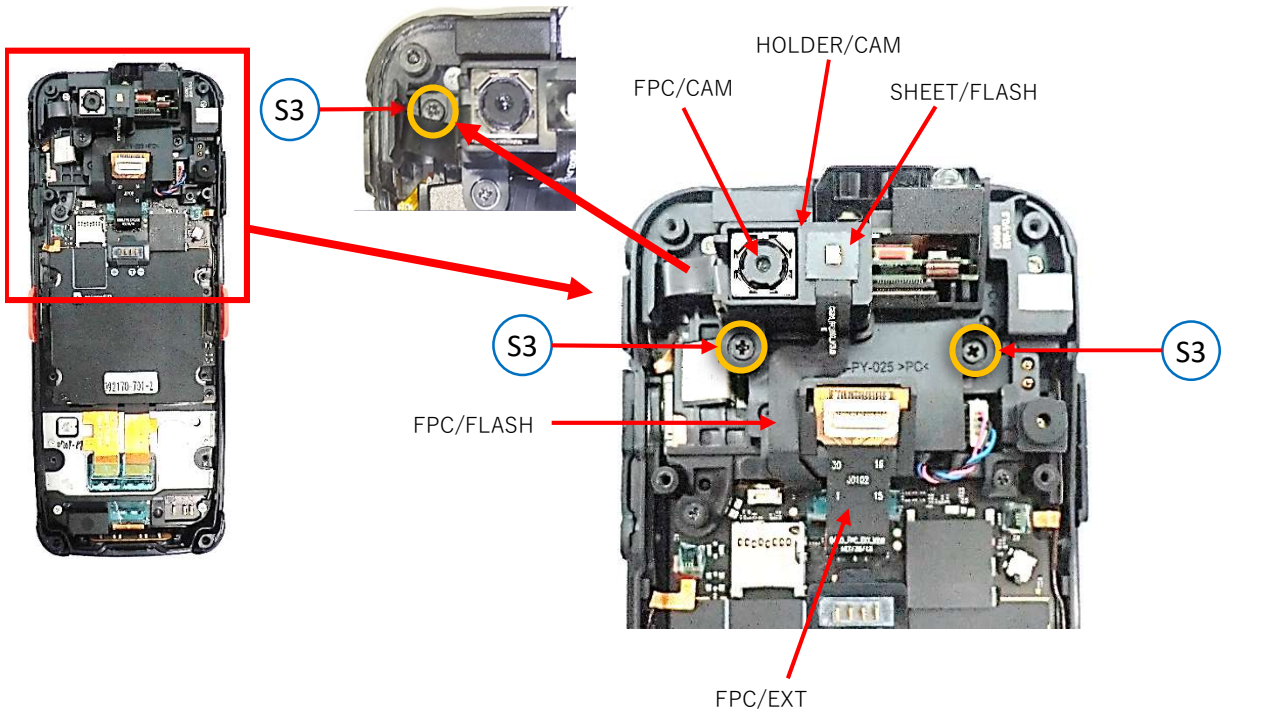
Use a # 1 precision screwdriver to remove the screws shown in S3 below.

IT-G600-WC21

Remove SHEET/FLASH and remove FPC/FLASH.

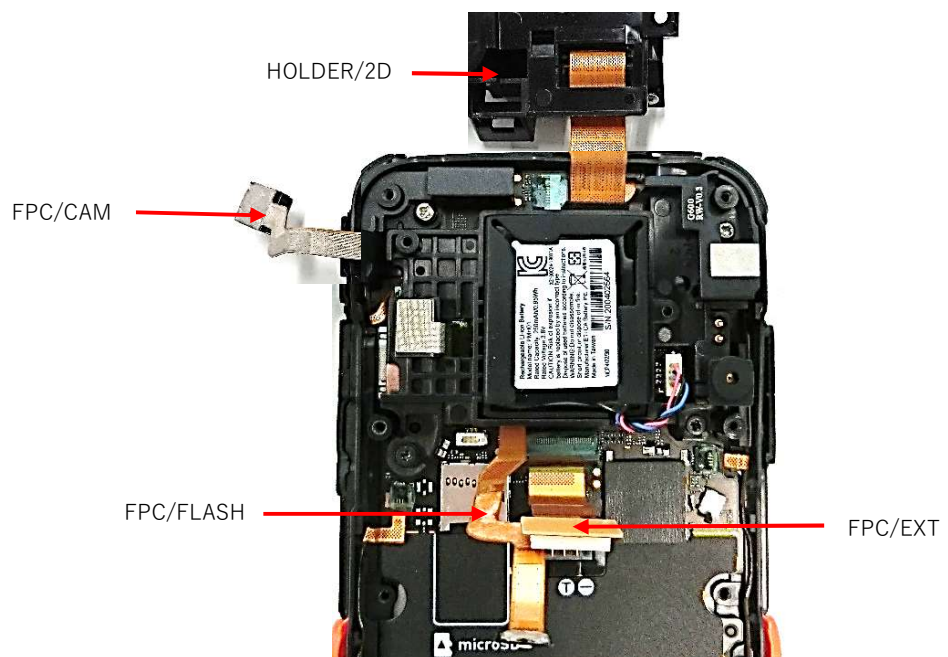
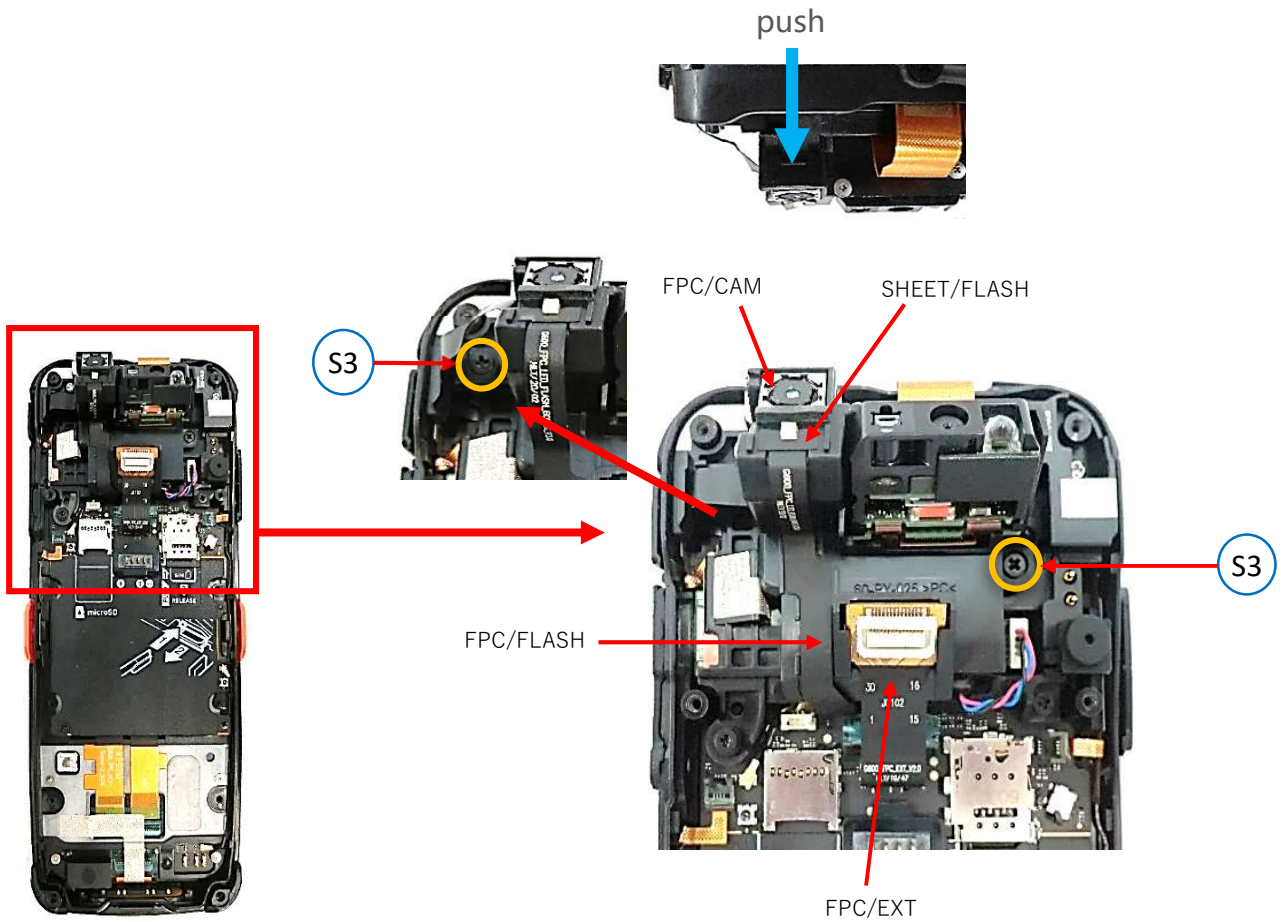
IT-G600-WC01

Slide the FPC/EXT up to remove it.



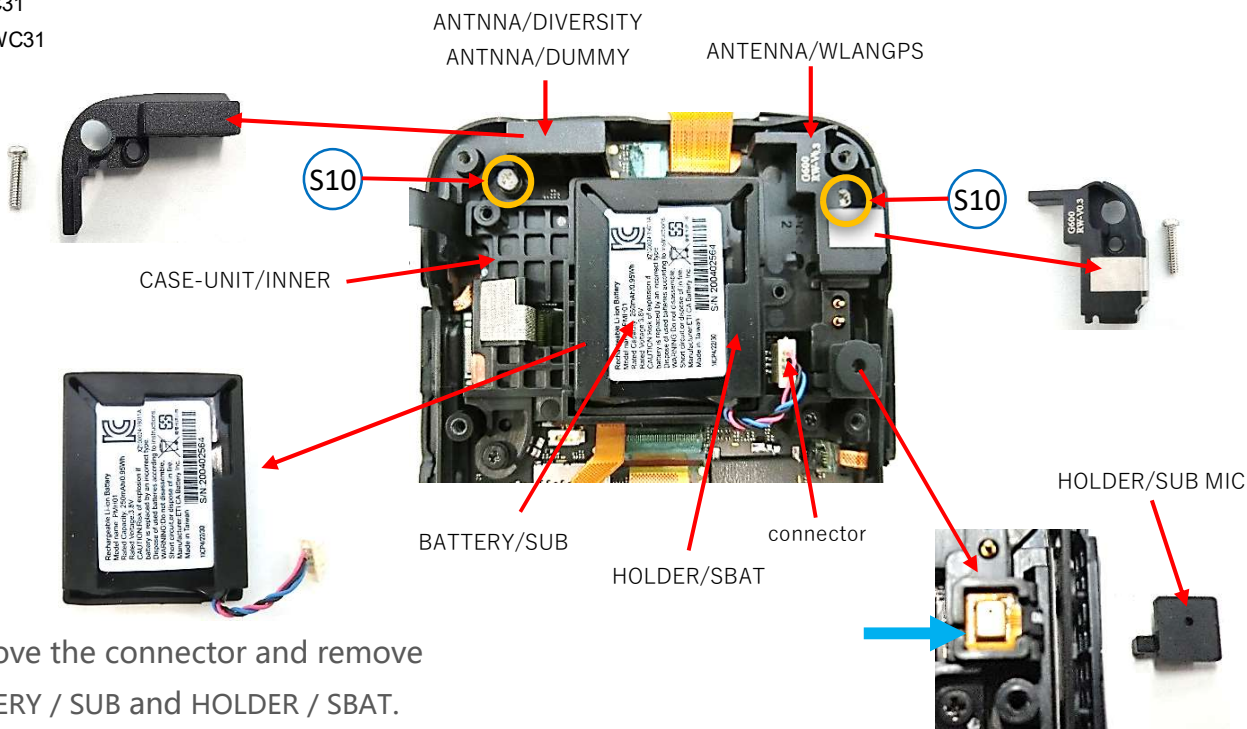
IT-G600-C31
IT-G600-WC31

Use a # 1 precision screwdriver to remove the screws shown in S3 below.
Push and remove the FPC / CAM through the gap indicated by the blue arrow.
Remove CUSHION/CLED and SHEET/FLASH and remove FPC/FLASH.
Slide the FPC/EXT up to remove it.



IT-G600-C21
 IT-G600-WC21
 IT-G600-WC01
 IT-G600-C31
 IT-G600-WC31

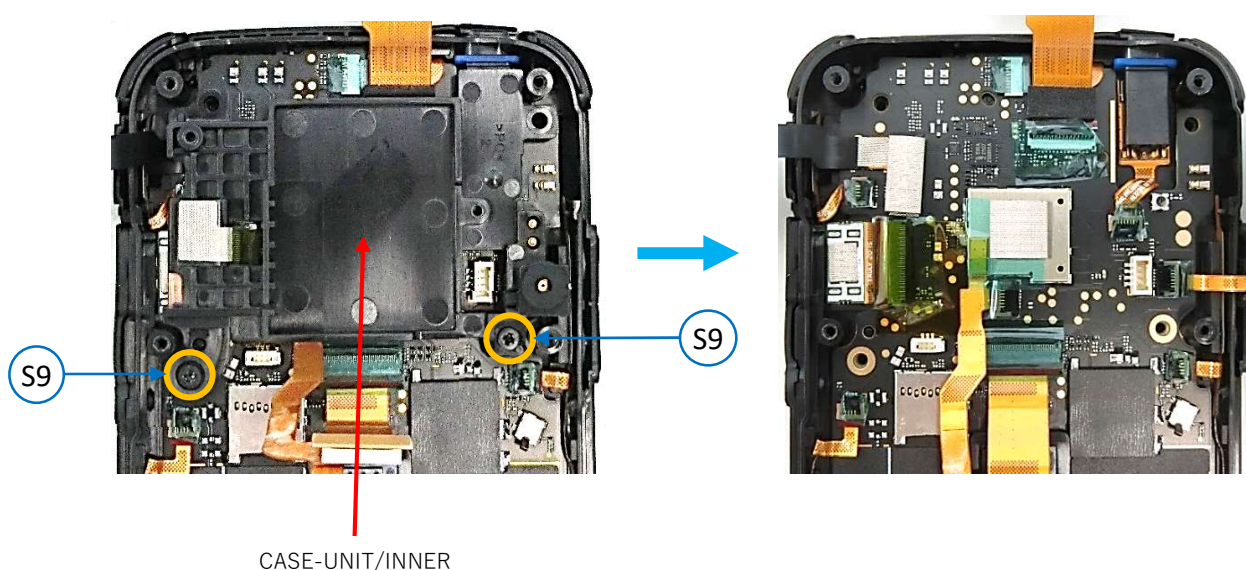
Use a # 1 precision screwdriver (+) to remove the S10 screw shown below.
 Remove ANTNNNA / DIVERSITY , ANTNNNA / DUMMY and ANTENNA / WLANGPS.



Remove the connector and remove BATTERY / SUB and HOLDER / SBAT.

Insert tweezers etc. into the blue arrow and remove it.

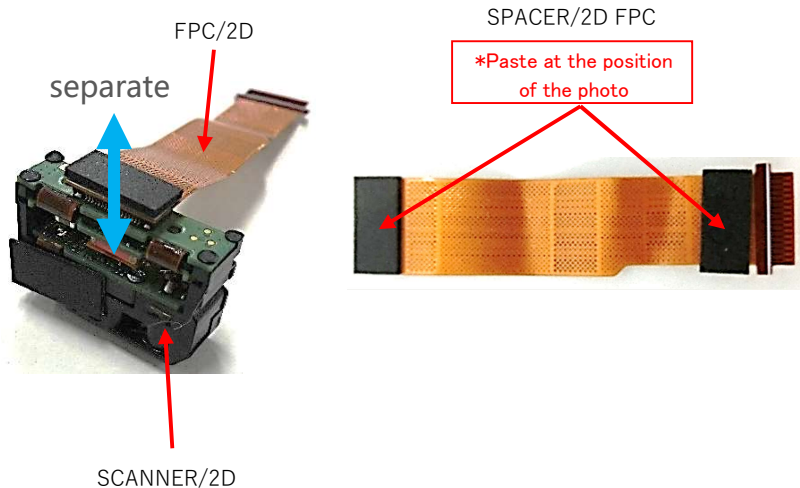
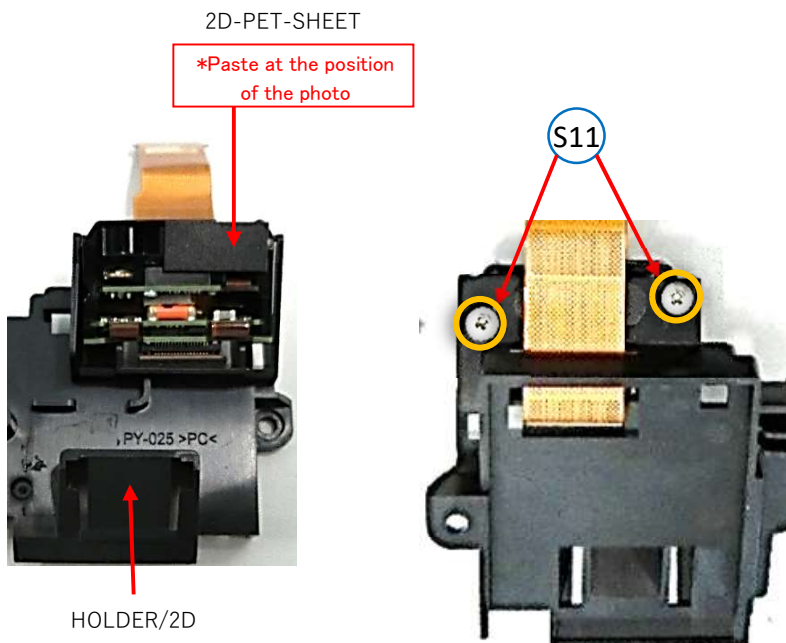
Use a # 1 precision screwdriver (+) to remove the S9 screw shown below.
 Remove CASE-UNIT/INNER.



6. Removing the 2D SCANNER

IT-G600-C21
 IT-G600-WC21
 IT-G600-WC01
 IT-G600-C31
 IT-G600-WC31

Use a # 1 precision screwdriver (+) to remove the S11 screw shown below.
 Remove SCANNER/2D.



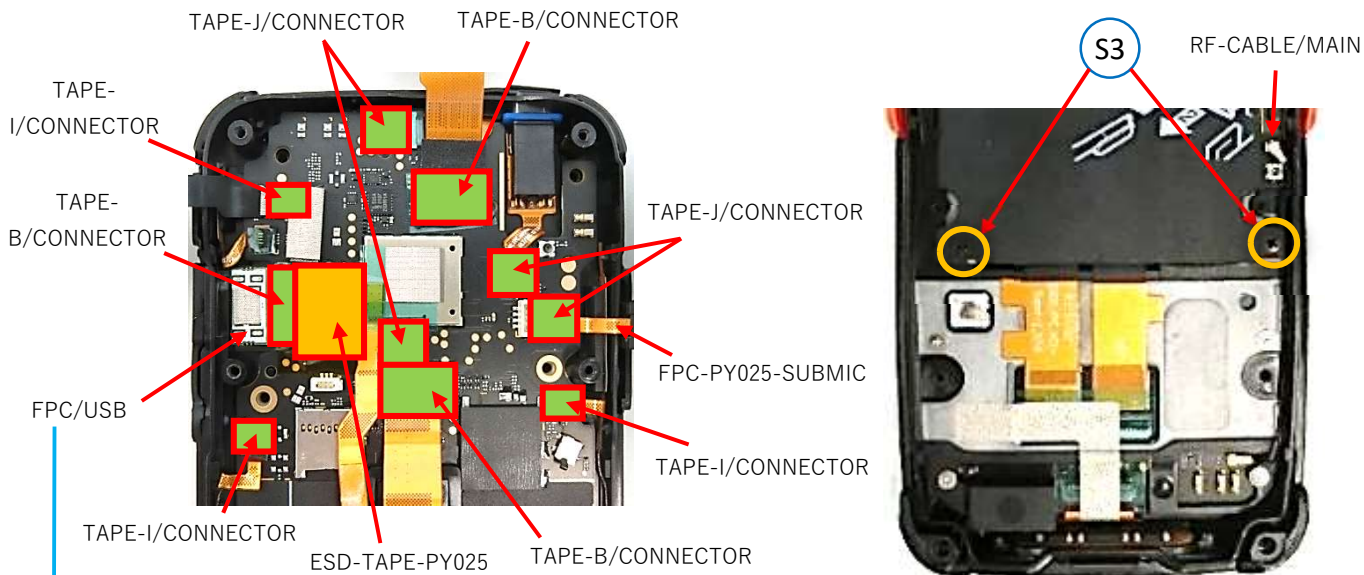
7. Removing the Main board

IT-G600-C21
 IT-G600-WC21
 IT-G600-WC01
 IT-G600-C31
 IT-G600-WC31

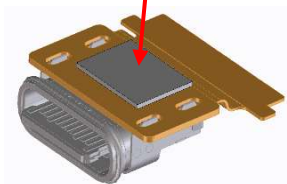
Remove the tapes and remove each FPC.

Disconnect the RF-CABLE/MAIN connector.

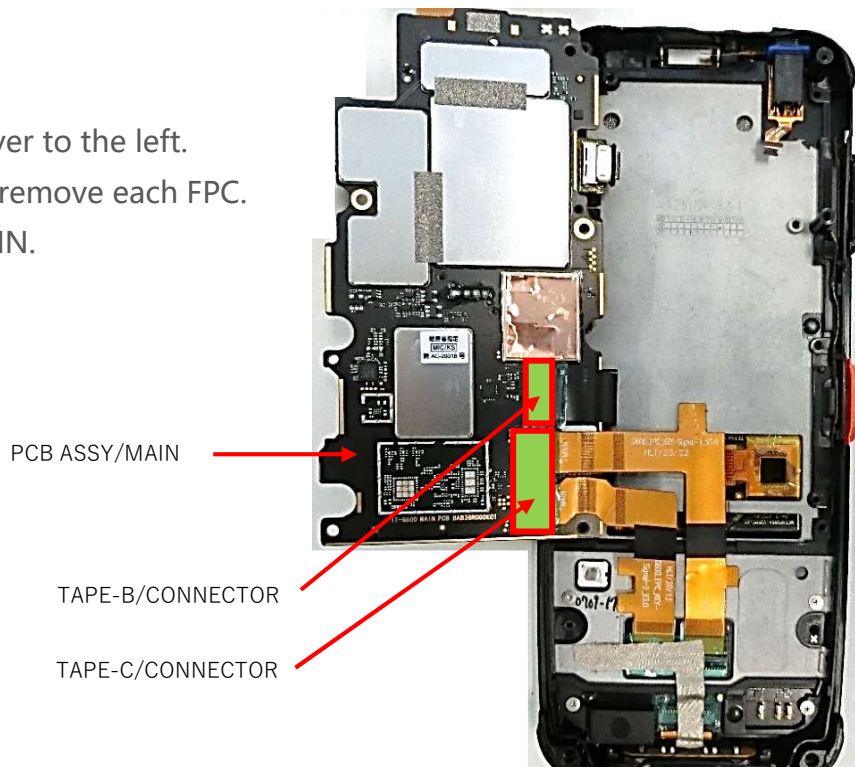
Use a # 1 precision screwdriver (+) to remove the S3 screw shown below.



FORM/EMI-B
 *Paste at the position of the photo



Turn the main board over to the left.
 Remove the tapes and remove each FPC.
 Remove PCB ASSY/MAIN.



8. Removing the LOWER CASE BLOCK

The following parts are attached to the U-CASE and cannot be disassembled any further.

- TOUCH PANEL
- KEY
- SIDE-KEY-FPC
- LCD MODULE
- KEY-PCB
- Illuminance /Proximity Sensor
- RECEIVER
- KEY-FPC
- Power Supply/Data Terminals

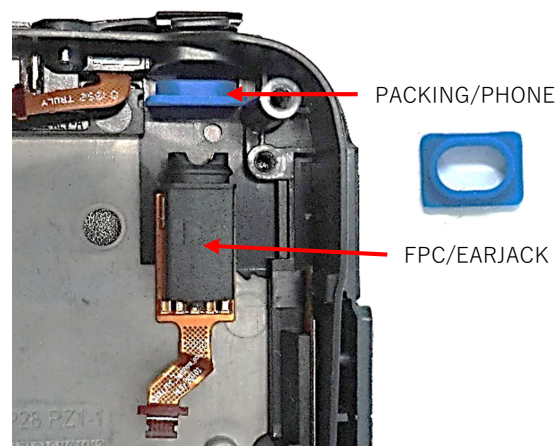
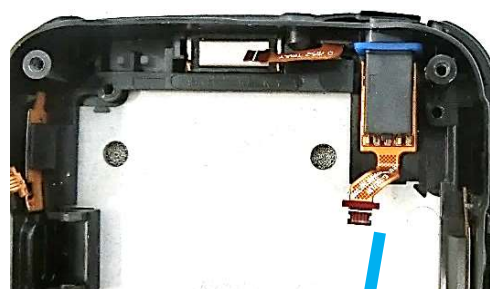
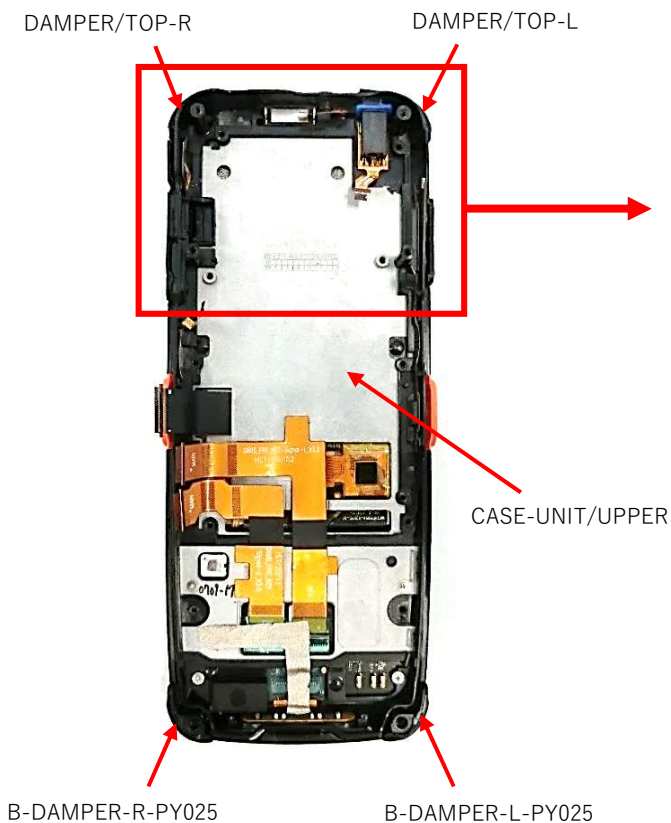
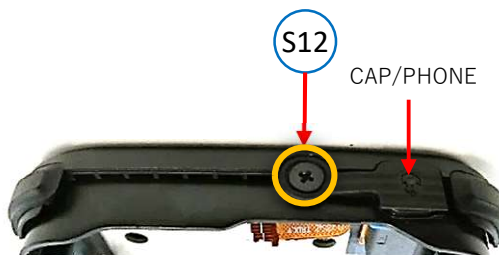
The following parts are not included in the upper case assembly.

Attach when replacing the upper case assembly.

- SIDE-KEYS
- CORNER PARTS(DAMPER)
- CONNECTER CAPS(EARPHONE JACK、 USB CONNECTER)

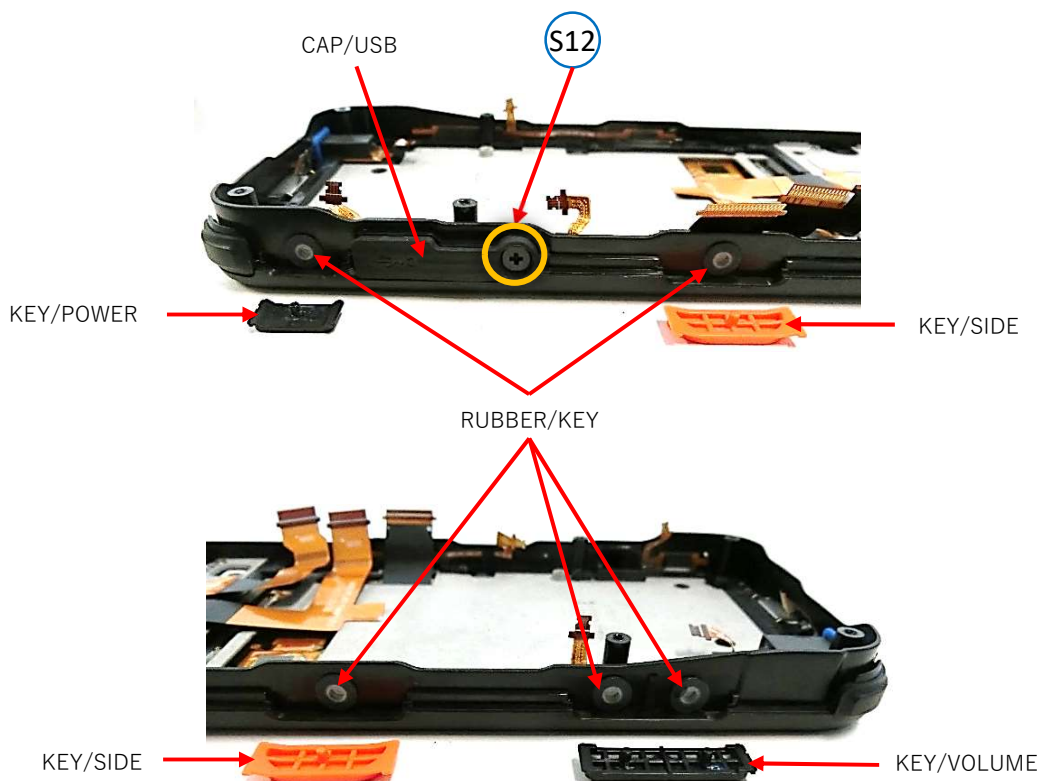
IT-G600-C21
 IT-G600-WC21
 IT-G600-WC01
 IT-G600-C31
 IT-G600-WC31

Use a # 1 precision screwdriver (+) to remove the S12 screw shown below.

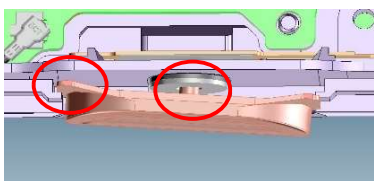


IT-G600-C21
 IT-G600-WC21
 IT-G600-WC01
 IT-G600-C31
 IT-G600-WC31

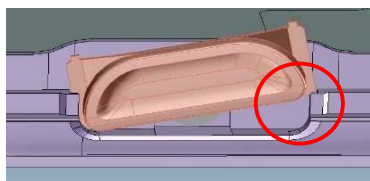
Use a # 1 precision screwdriver (+) to remove the S12 screw shown below.



How to attach the key



Insert the left side of the key into the groove on the upper case. Fit the round pin in the center into the hole in the S-KEY-RUBBER.



While maintaining the state shown on the left, raise the right side of the key and insert it into the groove of the upper case and lower it.

