

# EXPLODED VIEW/PARTS LIST

## ■ DT-X400-10 / DT-X400-20 / DT-X400-C21 / DT-X400-WC21 / DT-X400-10-CN / DT-X400-20-CN

<b>1.</b>	<b>FINAL ASSY, LABEL</b> .....	<b>P. 2</b>
<b>2.</b>	<b>R-CASE</b> .....	<b>P. 3</b>
<b>3.</b>	<b>BRACKET</b> .....	<b>P. 5</b>
<b>4.</b>	<b>MAIN-ASSY</b> .....	<b>P. 7</b>
<b>5.</b>	<b>INNER-CASE</b> .....	<b>P. 8</b>
<b>6.</b>	<b>F-CASE</b> .....	<b>P. 9</b>

## ■ DT-X400-10-EU / DT-X400-20-EU / DT-X400-C21-EU / DT-X400-WC21-EU / DT-X400-10-RU / DT-X400-20-RU

<b>1.</b>	<b>FINAL ASSY, LABEL</b> .....	<b>P. 10</b>
<b>2.</b>	<b>R-CASE</b> .....	<b>P. 11</b>
<b>3.</b>	<b>BRACKET</b> .....	<b>P. 13</b>
<b>4.</b>	<b>MAIN-ASSY</b> .....	<b>P. 15</b>
<b>5.</b>	<b>INNER-CASE</b> .....	<b>P. 16</b>
<b>6.</b>	<b>F-CASE</b> .....	<b>P. 17</b>

## ■ ACCESSORIES ..... P. 18

### NOTES :

- Refer to the latest "Parts Price Code" at "PARTS FINDER" on the Casio Service WEB site (<https://www.servicecasio.com>).
- Remarks
  - N: New Parts
  - Q'ty: Quantity used per unit
  - RANK: A = Essential
  - B = Stock recommended
  - C = Less recommended
  - X = No stock recommended

■ FINAL ASSY, LABEL



1: DT-X400-10 2: DT-X400-20 3: DT-X400-C21 4: DT-X400-WC21 5: DT-X400-10-CN 6: DT-X400-20-CN

N	Item	Code No.	Parts Name	Specification	Q'ty						Remarks	R
					1	2	3	4	5	6		
<b>FINAL ASSY</b>												
N	1	10597011	COVER ASSY/BATTERY	G01-011178-00	1	1	1	1	1	1		C
N	S1	10597012	SCREW	G01-011070-00	4	4	4	4	4	4	TYPE: T8	X
N	S2	10597013	SCREW	G01-011071-00	2	2	2	2	2	2	TYPE: T8	X
N	S3	10597014	SCREW	G01-011072-00	2	2	2	2	2	2	TYPE: T8	X
<b>LABEL</b>												
N	98	10597122	LABEL/CAUTION	G01-011060-00	1	1	1	1				X
N	98	10597123	LABEL/CAUTION	G01-011061-00					1	1		X
N	99	10597124	LABEL/RATING	G01-011062-00	1							X
N	99	10597125	LABEL/RATING	G01-011063-00		1						X
N	99	10597126	LABEL/RATING	G01-011064-00			1					X
N	99	10597127	LABEL/RATING	G01-011065-00				1				X
N	99	10597130	LABEL/RATING	G01-011068-00					1			X
N	99	10597131	LABEL/RATING	G01-011069-00						1		X

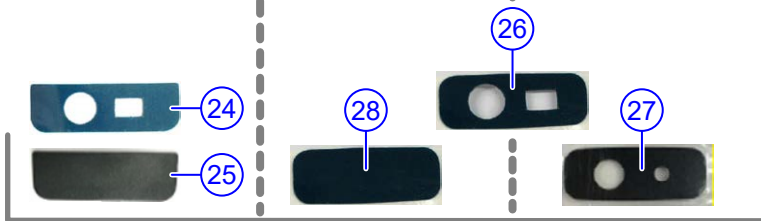
■ R-CASE

**CAMERA FILTER/BLIND**

DT-X400-10  
DT-X400-10-CN

DT-X400-20  
DT-X400-20-CN

DT-X400-C21  
DT-X400-WC21



**SCANNER FILTER**

DT-X400-10  
DT-X400-10-CN

DT-X400-20  
DT-X400-20-CN

DT-X400-C21  
DT-X400-WC21

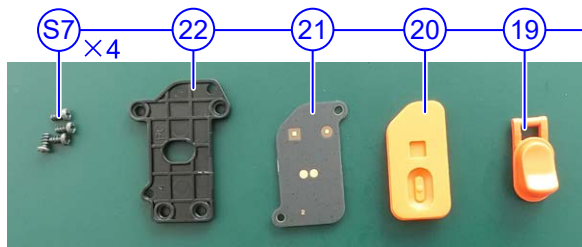
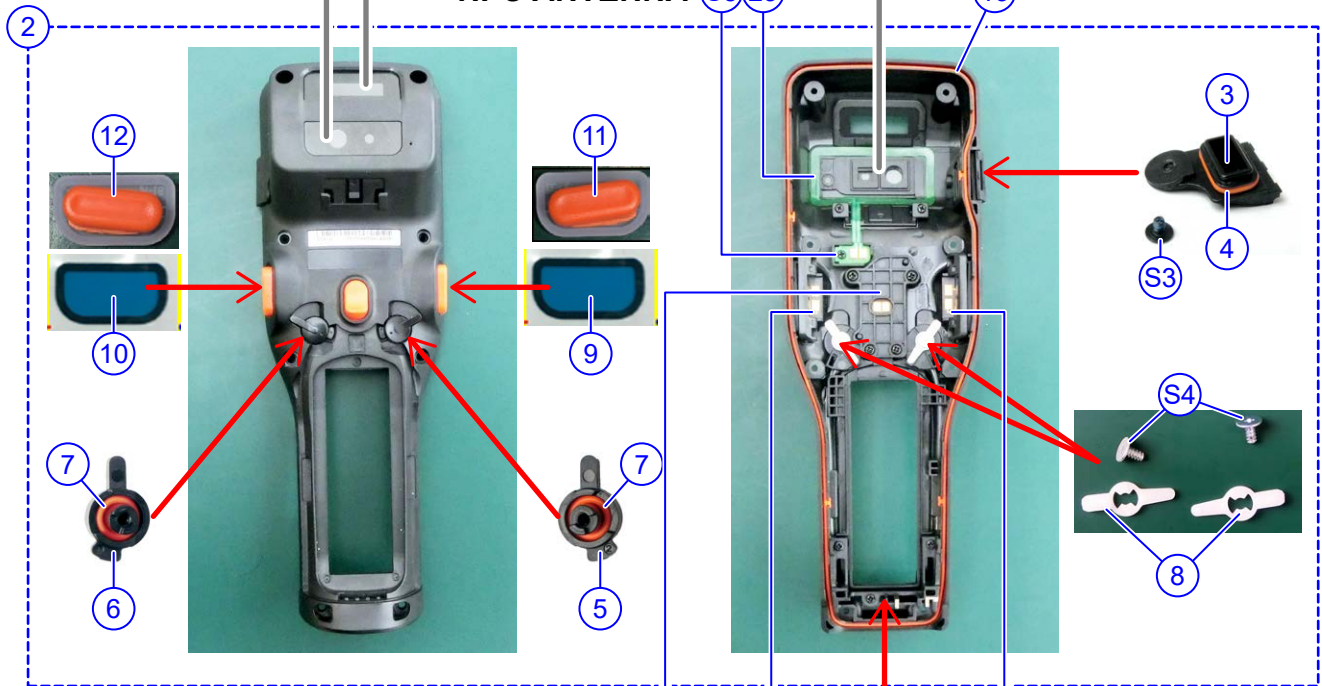


DT-X400-C21  
DT-X400-WC21

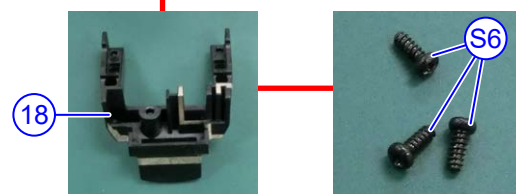


**NFC ANTENNA**

S8 S23



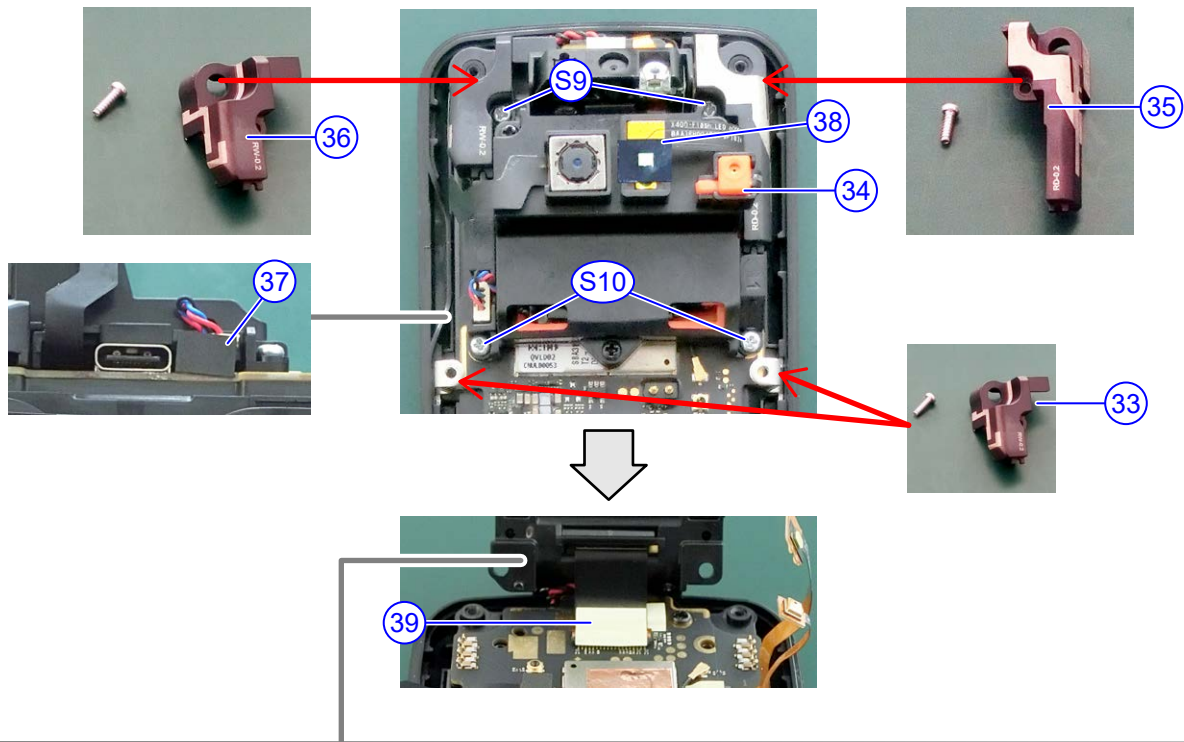
**BACK TRIGGER**



1: DT-X400-10 2: DT-X400-20 3: DT-X400-C21 4: DT-X400-WC21 5: DT-X400-10-CN 6: DT-X400-20-CN

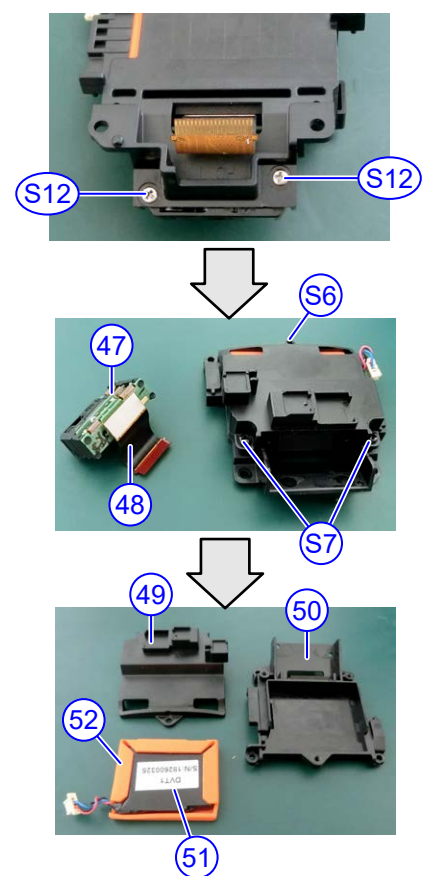
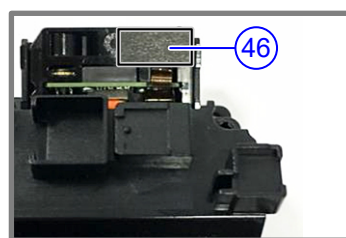
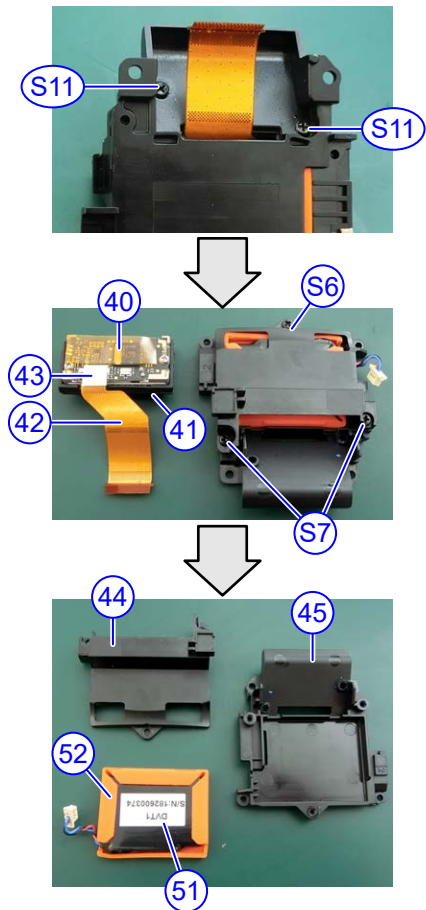
N	Item	Code No.	Parts Name	Specification	Q'ty						Remarks	R
					1	2	3	4	5	6		
<b>R-CASE</b>												
N	2	10597016	CASE-ASSY/LOWER	G01-011175-00	1				1			C
N	2	10597015	CASE-ASSY/LOWER	G01-011174-00		1	1	1		1		C
N	3	10597044	CAP/USB	G01-011143-00	1	1	1	1	1	1		C
N	4	10597045	O-RING/USB	G01-011144-00	1	1	1	1	1	1		C
N	S4	10597046	SCREW	G01-011145-00	1	1	1	1	1	1		X
N	5	10597047	HOOK-L/BATTERY	G01-011169-00	1	1	1	1	1	1		C
N	6	10597048	HOOK-R/BATTERY	G01-011170-00	1	1	1	1	1	1		C
N	7	10597049	O-RING/BAT-HOOK	G01-011171-00	2	2	2	2	2	2		C
N	8	10597050	LOCK/BATTERY-HOOK	G01-011172-00	2	2	2	2	2	2		C
N	S5	10597051	SCREW	G01-011173-00	2	2	2	2	2	2		X
N	9	10597052	D-TAPE/TRIGGER-L	G01-011159-00	1	1	1	1	1	1		X
N	10	10597053	D-TAPE/TRIGGER-R	G01-011160-00	1	1	1	1	1	1		X
N	11	10597054	KEY/SIDE-TRIGGER-L	G01-011161-00	1	1	1	1	1	1		C
N	12	10597055	KEY/SIDE-TRIGGER-R	G01-011162-00	1	1	1	1	1	1		C
N	13	10597059	O-RING	G01-011140-00	1	1	1	1	1	1		C
N	14	10597060	UNIT/TORIGGER-L	G01-011141-00	1	1	1	1	1	1		C
N	15	10597061	UNIT/TORIGGER-R	G01-011142-00	1	1	1	1	1	1		C
N	16	10597062	CUSHION/FLASH	G01-011157-00			1	1				C
N	17	10597063	CUSHION/CAMERA	G01-011158-00			1	1				C
N	18	10597056	ANTENNA-WAN	G01-011176-00				1				C
N	18	10597057	ANTENNA-DUMMY	G01-011177-00	1	1	1		1	1		C
N	S6	10597058	SCREW	G01-011113-00	3	3	3	3	3	3		X
N	19	10597064	KEY/BACK-TRIGGER	G01-011163-00	1	1	1	1	1	1		C
N	20	10597065	RUBBER/B-TRIGGER	G01-011164-00	1	1	1	1	1	1		C
N	21	10597017	PCB ASSY/B-TRIGGER	G01-011165-00	1	1	1	1	1	1		C
N	22	10597066	HOLDER/B-TRIGGER	G01-011166-00	1	1	1	1	1	1		C
N	S7	10597067	SCREW	G01-011090-00	4	4	4	4	4	4		X
N	23	10597018	PCB ASSY/NFC-ANT	G01-011167-00			1	1				C
N	S8	10597068	SCREW	G01-011104-00			1	1				X
N	24	10597069	D-TAPE/CAMERA-BLIND	G01-011146-00	1				1			C
N	25	10597070	BLIND/CAMERA	G01-011147-00	1				1			C
N	26	10597072	D-TAPE/CAMERA	G01-011149-00		1	1	1		1		C
N	27	10597073	FILTER/CAMERA	G01-011150-00			1	1				C
N	28	10597074	BLIND/CAMERA	G01-011151-00		1				1		C
N	29	10597075	D-TAPE/SCANNER	G01-011152-00	1				1			C
N	30	10597076	FILTER/LS-SCANNER	G01-011153-00	1				1			C
N	31	10597078	D-TAPE/SCANNER	G01-011155-00		1	1	1		1		C
N	32	10597079	FILTER/2D-SCANNER	G01-011156-00		1	1	1		1		C

■ BRACKET



DT-X400-10  
DT-X400-10-CN

DT-X400-20  
DT-X400-20-CN  
DT-X400-C21  
DT-X400-WC21

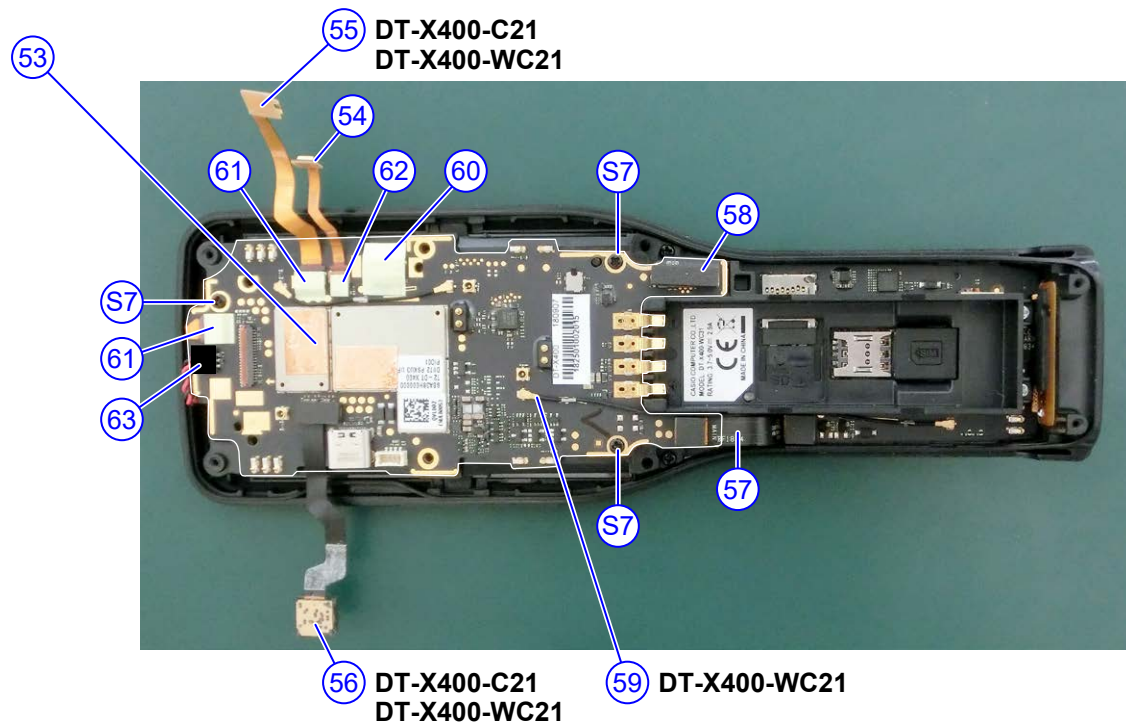


1: DT-X400-10 2: DT-X400-20 3: DT-X400-C21 4: DT-X400-WC21 5: DT-X400-10-CN 6: DT-X400-20-CN

N	Item	Code No.	Parts Name	Specification	Q'ty						Remarks	R
					1	2	3	4	5	6		
<b>BRACKET</b>												
N	33	10597080	PLATE/SCREW	G01-011075-00	2	2	2	2	2	2		C
N	34	10597081	HOLDER/MIC	G01-011076-00	1	1	1	1				X
N	S9	10597082	SCREW	G01-011077-00	2	2	2	2	2	2		X
N	S10	10597083	SCREW	G01-011078-00	2	2	2	2	2	2		X
N	35	10597084	ANTENNA-DIVERSITY	G01-011079-00				1				C
N	35	10597085	ANTENNA-DUMMY	G01-011080-00	1	1	1		1	1		C
N	36	10597086	ANTENNA-DUAL	G01-011081-00	1	1	1	1	1	1		C
N	37	10597087	SPACER/CN	G01-011082-00	1	1	1	1	1	1		C
N	38	10597098	SHEET/FLASH	G01-011234-00			1	1				C
	39	10559973	TAPE-LARGE	G01-010243-00	1	1	1	1	1	1		X
N	S11	10597088	SCREW	G01-011123-00	2				2			X
N	40	10582195	LASER-MODULE	MDL-1500	1				1			A
N	41	10597089	HOLDER/LASER	G01-011127-00	1				1			C
N	42	10597021	FPC/LASER-MODULE	G01-011125-00	1				1			A
	43	10559974	TAPE-MIDDLE	G01-010244-00	1				1			X
N	44	10597090	BRACKET/LS-S	G01-011122-00	1				1			C
N	45	10597091	BRACKET/LS-L	G01-011126-00	1				1			C
N	S12	10597092	SCREW	G01-011116-00		2	2	2		2		X
N	46	10597097	PAD/2D-SCAN	G01-011119-00		1	1	1		1		C
N	47	10597022	2D-MODULE	G01-011117-00		1	1	1		1		A
N	48	10597023	FPC/2D-MODULE	G01-011118-00		1	1	1		1		A
N	49	10597094	BRACKET/2D-S	G01-011115-00		1	1	1		1		C
N	50	10597096	BRACKET/2D-L	G01-011121-00		1	1	1		1		C
N	S6	10597058	SCREW	G01-011113-00	1	1	1	1	1	1		X
N	S7	10597067	SCREW	G01-011090-00	2	2	2	2	2	2		X
N	51	10597024	SUB-BATTRY	G01-011110-00	1	1	1	1	1	1		C
N	52	10597099	HOLDER/SUB-BATTRY	G01-011111-00	1	1	1	1	1	1		C



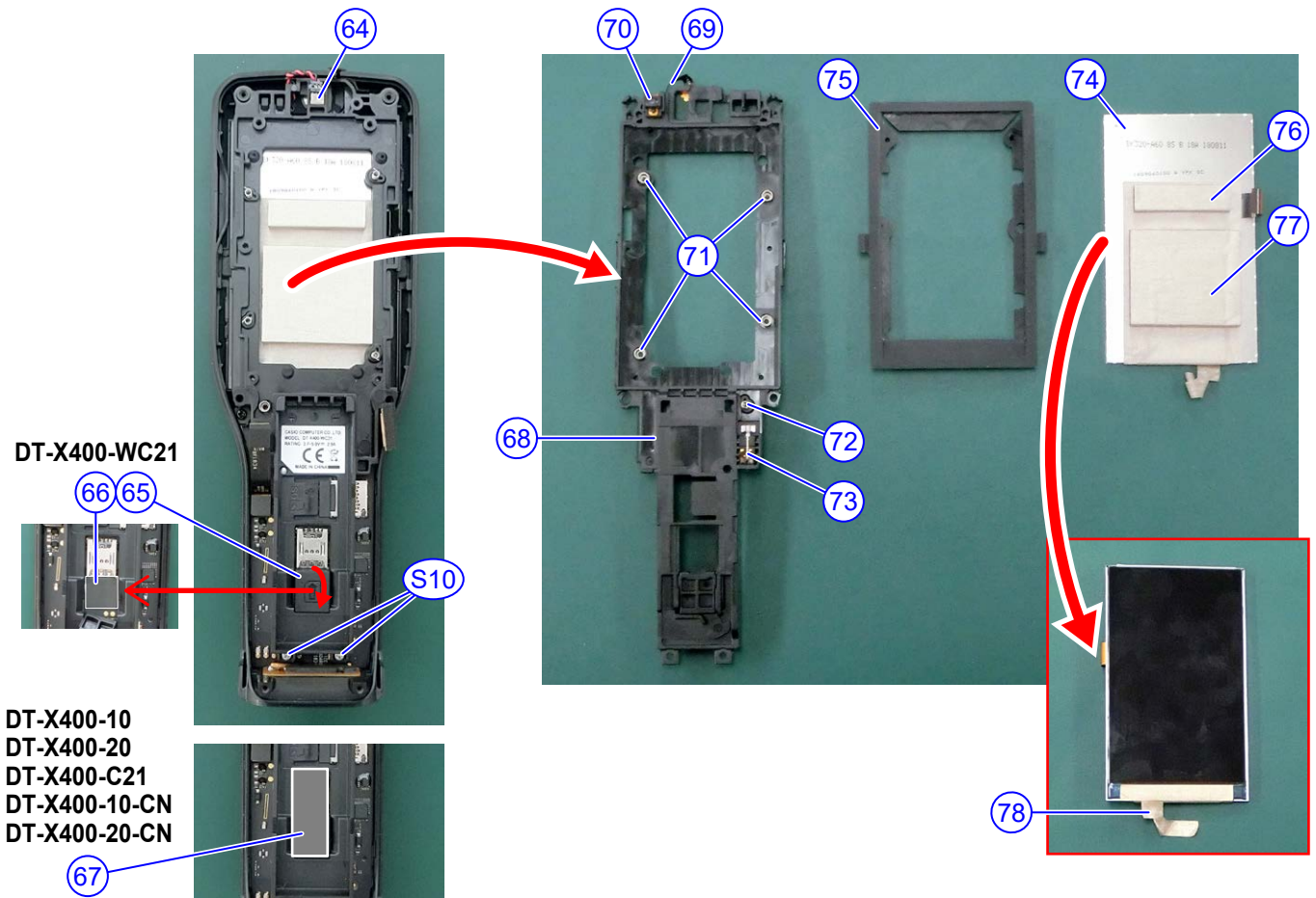
## ■ MAIN-ASSY



1: DT-X400-10 2: DT-X400-20 3: DT-X400-C21 4: DT-X400-WC21 5: DT-X400-10-CN 6: DT-X400-20-CN

N	Item	Code No.	Parts Name	Specification	Q'ty						Remarks	R
					1	2	3	4	5	6		
<b>MAIN-ASSY</b>												
N	53	10597025	PCB ASSY/MAIN	G01-011091-00	1	1			1	1		A
N	53	10597026	PCB ASSY/MAIN	G01-011092-00			1					A
N	53	10597027	PCB ASSY/MAIN	G01-011093-00				1				A
N	S7	10597067	SCREW	G01-011090-00	3	3	3	3	3	3		X
N	54	10597028	FPC/MIC	G01-011084-00	1	1	1	1				B
N	55	10597029	FPC/LED	G01-011086-00			1	1				B
N	56	10597031	FPC/CAMERA	G01-011088-00			1	1				A
N	57	10597033	FPC/POWER	G01-011089-00	1	1	1	1	1	1		C
N	58	10597034	FPC/KEY	G01-011099-00	1	1	1	1	1	1		C
N	59	10597035	CABLE/ANNTENA	G01-011098-00				1				C
	60	10559973	TAPE-LARGE	G01-010243-00	1	1	1	1	1	1		X
	61	10559974	TAPE-MIDDLE	G01-010244-00	1	2	2	2	1	2		X
	62	10559975	TAPE-SMALL	G01-010245-00	1	1	1	1				X
N	63	10597100	TAPE-SPEAKER	G01-011083-00	1	1	1	1	1	1		X

■ INNER-CASE

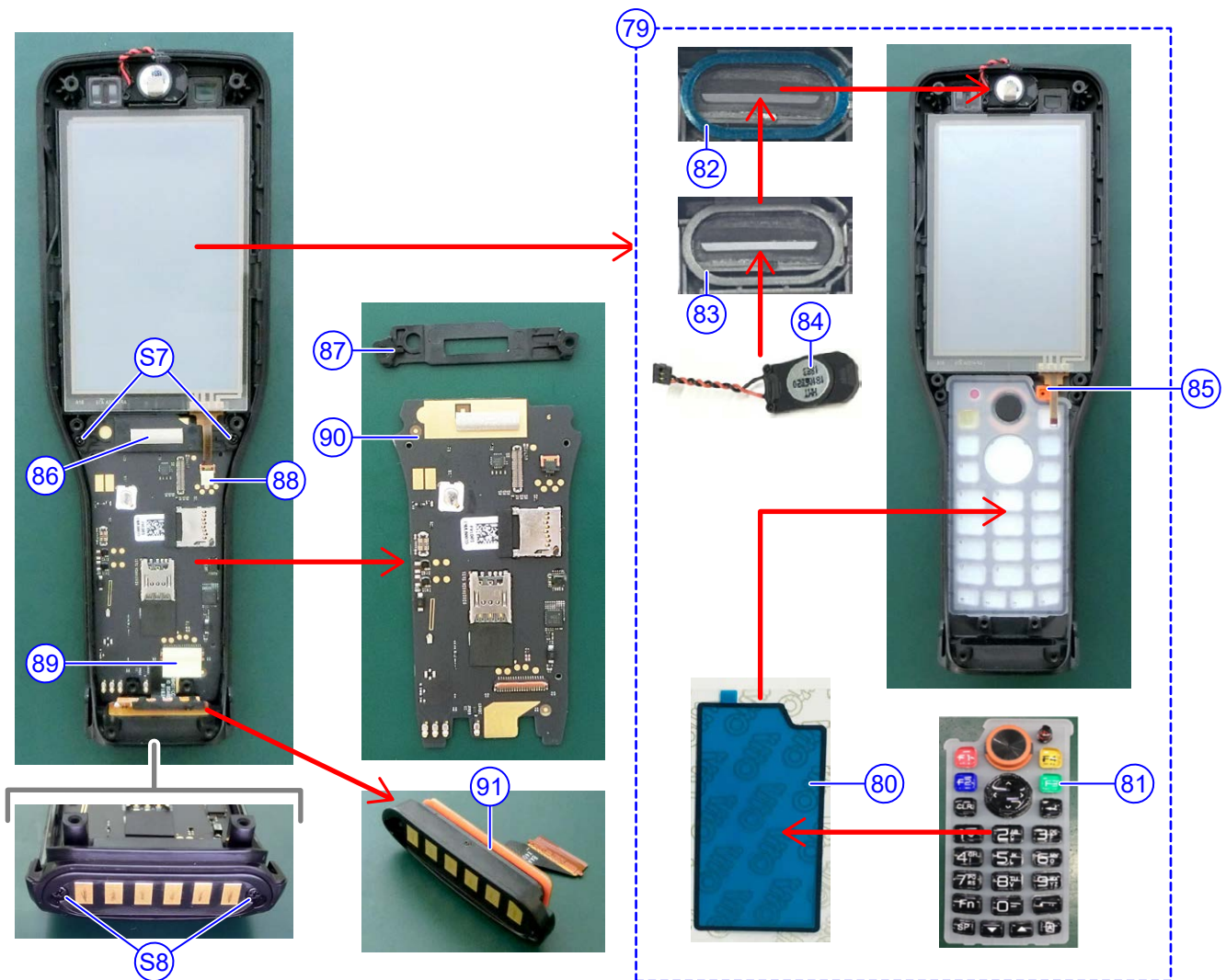


1: DT-X400-10 2: DT-X400-20 3: DT-X400-C21 4: DT-X400-WC21 5: DT-X400-10-CN 6: DT-X400-20-CN

N	Item	Code No.	Parts Name	Specification	Q'ty						Remarks	R
					1	2	3	4	5	6		
<b>INNER-CASE</b>												
N	64	10597102	GASKET/SPEAKER	G01-011097-00	1	1	1	1	1	1		B
N	65	10597103	STOPPER/CARD	G01-011130-00				1				X
N	66	10597104	SHEET/PET	G01-011073-00				1				X
N	67	10597105	SHEET/RUBBER	G01-011074-00	1	1	1		1	1		X
N	68	10597101	CASE/INNER	G01-011135-00	1	1	1	1	1	1		C
N	S10	10597083	SCREW	G01-011078-00	2	2	2	2	2	2		X
N	69	10597036	FPC/SENSOR	G01-011128-00	1	1	1	1	1	1		C
N	70	10597106	HOLDER/SENSOR	G01-011129-00	1	1	1	1	1	1		C
N	71	10597112	SPRING/LCD	G01-011136-00	4	4	4	4	4	4		X
N	72	10597113	SPRING/KEY	G01-011137-00	1	1	1	1	1	1		X
N	73	10597107	VIBRATOR	G01-011131-00	1	1	1	1	1	1		C
N	74	10597037	MODULE/LCD	G01-011132-00	1	1	1		1	1		A
N	74	10597038	MODULE/LCD	G01-011133-00				1				A
N	75	10597108	CUSHION/LCD	G01-011134-00	1	1	1	1	1	1		C
N	76	10597110	GASKET/LCD-S	G01-011138-00				1				A
N	77	10597111	GASKET/LCD-L	G01-011139-00				1				A
N	78	10597109	TAPE-EMI	G01-011236-00				1				A



■ F-CASE



1: DT-X400-10 2: DT-X400-20 3: DT-X400-C21 4: DT-X400-WC21 5: DT-X400-10-CN 6: DT-X400-20-CN

N	Item	Code No.	Parts Name	Specification	Q'ty						Remarks	R
					1	2	3	4	5	6		
<b>F-CASE</b>												
N	79	10597039	CASE-ASSY/UPPER	G01-011107-00	1	1	1	1	1	1		C
N	80	10597114	D-TAPE/KEY	G01-011109-00	1	1	1	1	1	1		C
N	81	10597115	KEY-FRONT	G01-011108-00	1	1	1	1	1	1		C
N	82	10597116	CUSHION/SPEAKER	G01-011100-00	1	1	1	1	1	1		C
N	83	10597117	D-TAPE/SPEAKER	G01-011101-00	1	1	1	1	1	1		C
N	84	10597118	SPEAKER	G01-011102-00	1	1	1	1	1	1		C
N	85	10597119	HOLDER/MIC	G01-011106-00	1	1	1	1				C
N	86	10597121	GASKET/KEY	G01-011235-00				1				C
N	S7	10597067	SCREW	G01-011090-00	2	2	2	2	2	2		C
N	87	10597120	HOLDER/KEY	G01-011105-00	1	1	1	1	1	1		C
	88	10559975	TAPE-SMALL	G01-010245-00	1	1	1	1	1	1		X
	89	10559973	TAPE-LARGE	G01-010243-00	1	1	1	1	1	1		X
N	90	10597040	PCB ASSY/KEY	G01-011094-00	1	1	1		1	1		A
N	90	10597041	PCB ASSY/KEY	G01-011095-00				1				A
N	S8	10597068	SCREW	G01-011104-00	2	2	2	2	2	2		X
N	91	10597043	ASSY/IO	G01-011103-00	1	1	1	1	1	1		A

■ FINAL ASSY, LABEL



1: DT-X400-10-EU 2: DT-X400-20-EU 3: DT-X400-C21-EU 4: DT-X400-WC21-EU 5: DT-X400-10-RU 6: DT-X400-20-RU

N	Item	Code No.	Parts Name	Specification	Q'ty						Remarks	R
					1	2	3	4	5	6		
<b>FINAL ASSY</b>												
N	1	10597011	COVER ASSY/BATTERY	G01-011178-00	1	1	1	1	1	1		C
N	S1	10597012	SCREW	G01-011070-00	4	4	4	4	4	4	TYPE: T8	X
N	S2	10597013	SCREW	G01-011071-00	2	2	2	2	2	2	TYPE: T8	X
N	S3	10597014	SCREW	G01-011072-00	2	2	2	2	2	2	TYPE: T8	X
<b>LABEL</b>												
N	98	10597122	LABEL/CAUTION	G01-011060-00	1	1	1	1	1	1		X
N	99	10597132	LABEL/RATING	G01-011228-00	1							X
N	99	10597133	LABEL/RATING	G01-011229-00		1						X
N	99	10597134	LABEL/RATING	G01-011230-00			1					X
N	99	10597135	LABEL/RATING	G01-011231-00				1				X
N	99	10597136	LABEL/RATING	G01-011232-00					1			X
N	99	10597137	LABEL/RATING	G01-011233-00						1		X

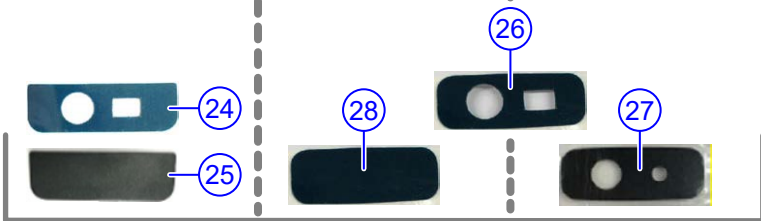
■ R-CASE

**CAMERA FILTER/BLIND**

DT-X400-10-EU  
DT-X400-10-RU

DT-X400-20-EU  
DT-X400-20-RU

DT-X400-C21-EU  
DT-X400-WC21-EU



**SCANNER FILTER**

DT-X400-10-EU  
DT-X400-10-RU

DT-X400-20-EU  
DT-X400-20-RU  
DT-X400-C21-EU  
DT-X400-WC21-EU



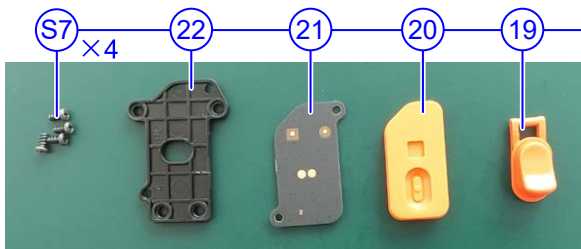
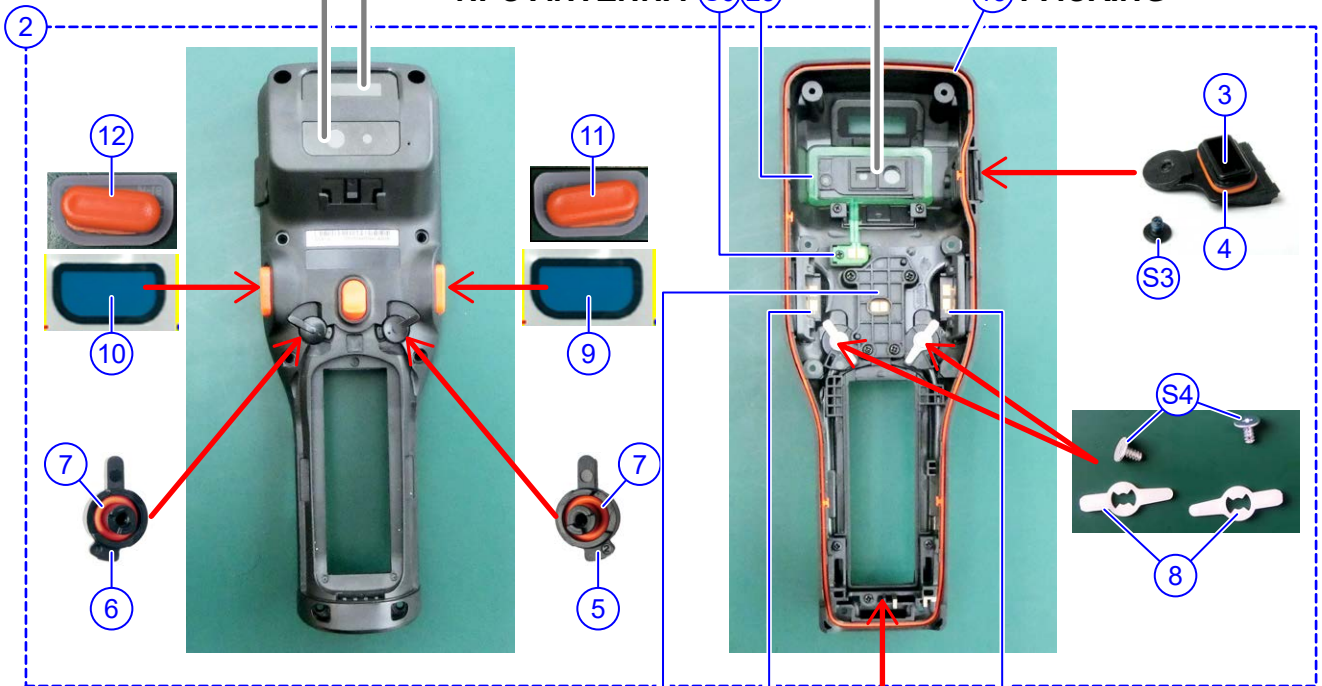
DT-X400-C21-EU  
DT-X400-WC21-EU



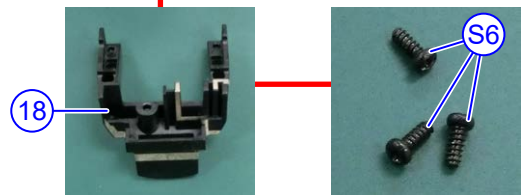
**NFC ANTENNA**

S6 23

**PACKING**



**BACK TRIGGER**

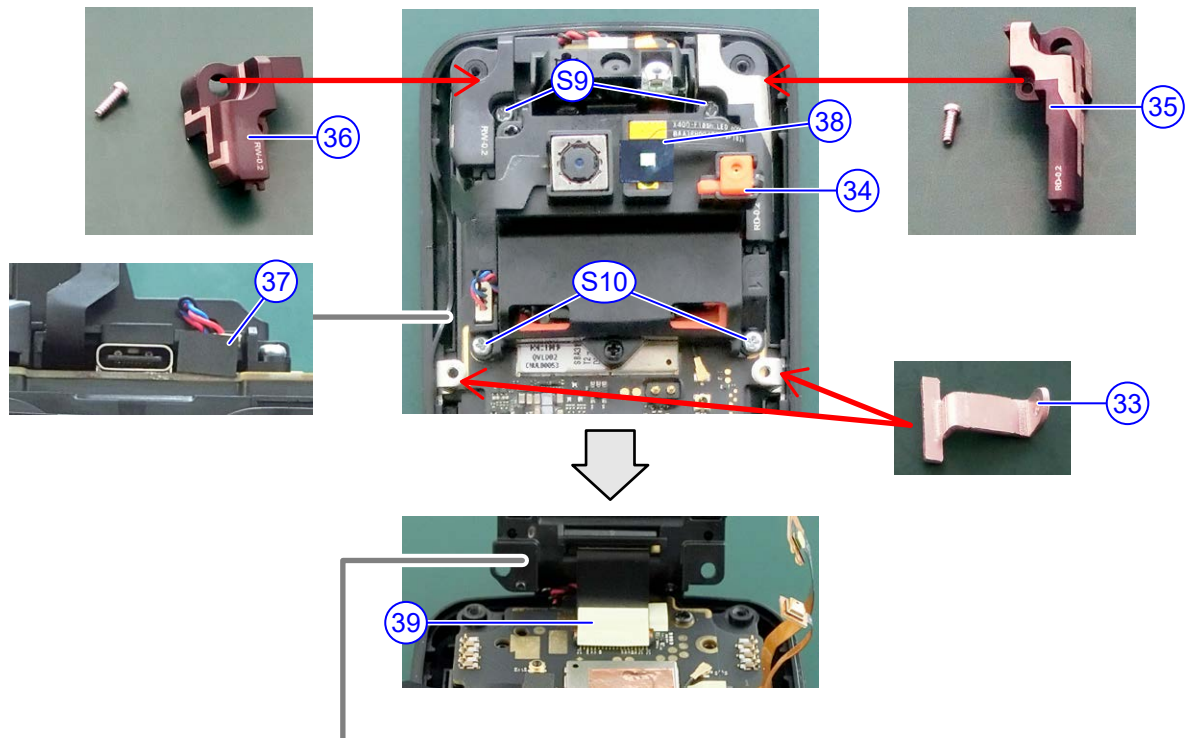


1: DT-X400-10-EU 2: DT-X400-20-EU 3: DT-X400-C21-EU 4: DT-X400-WC21-EU 5: DT-X400-10-RU 6: DT-X400-20-RU

N	Item	Code No.	Parts Name	Specification	Q'ty						Remarks	R
					1	2	3	4	5	6		
<b>R-CASE</b>												
N	2	10597016	CASE-ASSY/LOWER	G01-011175-00	1				1			C
N	2	10597015	CASE-ASSY/LOWER	G01-011174-00		1	1	1		1		C
N	3	10597044	CAP/USB	G01-011143-00	1	1	1	1	1	1		C
N	4	10597045	O-RING/USB	G01-011144-00	1	1	1	1	1	1		C
N	S4	10597046	SCREW	G01-011145-00	1	1	1	1	1	1		X
N	5	10597047	HOOK-L/BATTERY	G01-011169-00	1	1	1	1	1	1		C
N	6	10597048	HOOK-R/BATTERY	G01-011170-00	1	1	1	1	1	1		C
N	7	10597049	O-RING/BAT-HOOK	G01-011171-00	2	2	2	2	2	2		C
N	8	10597050	LOCK/BATTERY-HOOK	G01-011172-00	2	2	2	2	2	2		C
N	S5	10597051	SCREW	G01-011173-00	2	2	2	2	2	2		C
N	9	10597052	D-TAPE/TRIGGER-L	G01-011159-00	1	1	1	1	1	1		X
N	10	10597053	D-TAPE/TRIGGER-R	G01-011160-00	1	1	1	1	1	1		C
N	11	10597054	KEY/SIDE-TRIGGER-L	G01-011161-00	1	1	1	1	1	1		C
N	12	10597055	KEY/SIDE-TRIGGER-R	G01-011162-00	1	1	1	1	1	1		C
N	13	10597059	O-RING	G01-011140-00	1	1	1	1	1	1		C
N	14	10597060	UNIT/TORIGGER-L	G01-011141-00	1	1	1	1	1	1		C
N	15	10597061	UNIT/TORIGGER-R	G01-011142-00	1	1	1	1	1	1		X
N	16	10597062	CUSHION/FLASH	G01-011157-00			1	1				C
N	17	10597063	CUSHION/CAMERA	G01-011158-00			1	1				C
N	18	10597056	ANTENNA-WAN	G01-011176-00				1				C
N	18	10597057	ANTENNA-DUMMY	G01-011177-00	1	1	1		1	1		C
N	S6	10597058	SCREW	G01-011113-00	3	3	3	3	3	3		C
N	19	10597064	KEY/BACK-TRIGGER	G01-011163-00	1	1	1	1	1	1		C
N	20	10597065	RUBBER/B-TRIGGER	G01-011164-00	1	1	1	1	1	1		X
N	21	10597017	PCB ASSY/B-TRIGGER	G01-011165-00	1	1	1	1	1	1		C
N	22	10597066	HOLDER/B-TRIGGER	G01-011166-00	1	1	1	1	1	1		C
N	S7	10597067	SCREW	G01-011090-00	4	4	4	4	4	4		C
N	23	10597018	PCB ASSY/NFC-ANT	G01-011167-00			1	1				C
N	S8	10597068	SCREW	G01-011104-00			1	1				C
N	24	10597069	D-TAPE/CAMERA-BLIND	G01-011146-00	1				1			C
N	25	10597070	BLIND/CAMERA	G01-011147-00	1				1			X
N	26	10597072	D-TAPE/CAMERA	G01-011149-00		1	1	1		1		C
N	27	10597073	FILTER/CAMERA	G01-011150-00			1	1				C
N	28	10597074	BLIND/CAMERA	G01-011151-00		1				1		C
N	29	10597075	D-TAPE/SCANNER	G01-011152-00	1				1			C
N	30	10597076	FILTER/LS-SCANNER	G01-011153-00	1				1			C
N	31	10597078	D-TAPE/SCANNER	G01-011155-00		1	1	1		1		X
N	32	10597079	FILTER/2D-SCANNER	G01-011156-00		1	1	1		1		C

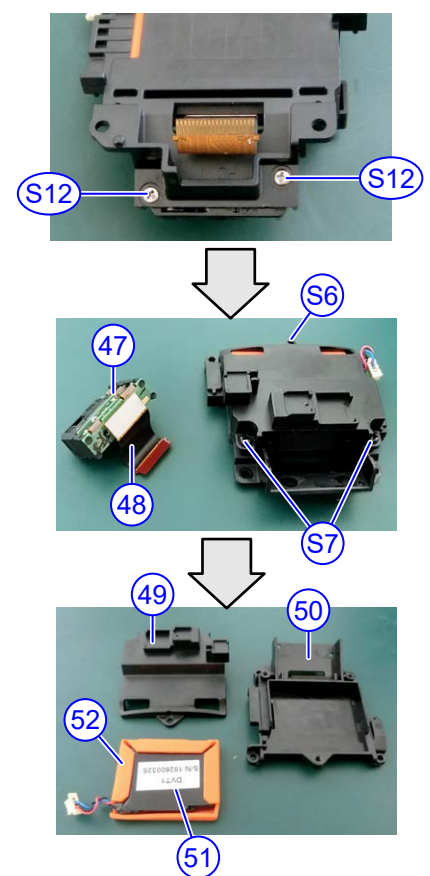
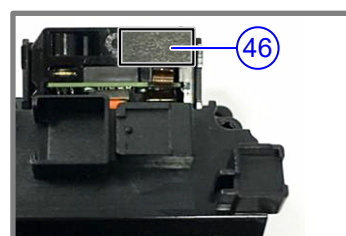
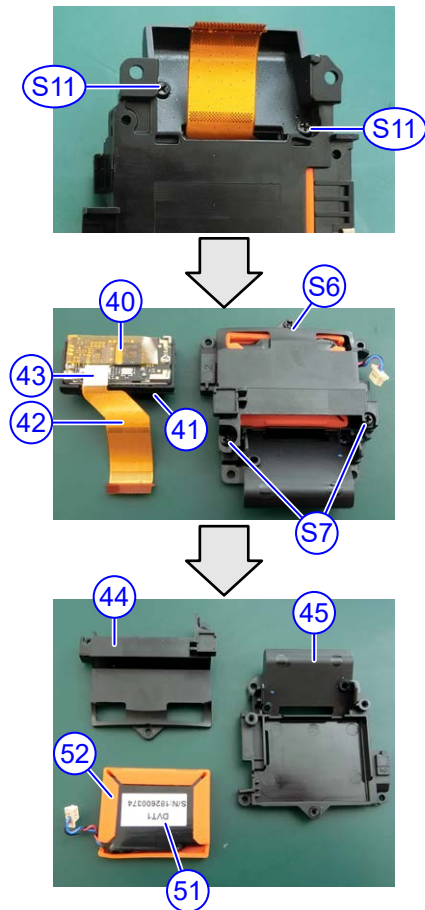


■ BRACKET



DT-X400-10-EU  
DT-X400-10-RU

DT-X400-20-EU  
DT-X400-20-RU  
DT-X400-C21-EU  
DT-X400-WC21-EU

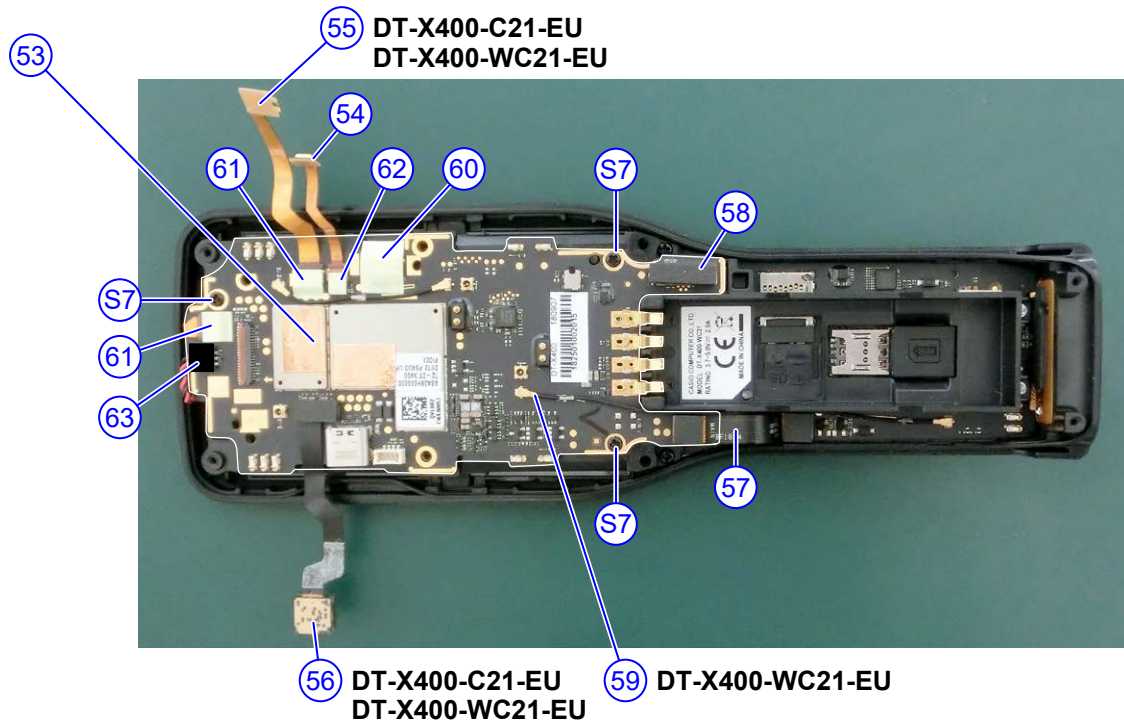




1: DT-X400-10-EU 2: DT-X400-20-EU 3: DT-X400-C21-EU 4: DT-X400-WC21-EU 5: DT-X400-10-RU 6: DT-X400-20-RU

N	Item	Code No.	Parts Name	Specification	Q'ty						Remarks	R
					1	2	3	4	5	6		
<b>BRACKET</b>												
N	33	10597080	PLATE/SCREW	G01-011075-00	2	2	2	2	2	2		C
N	34	10597081	HOLDER/MIC	G01-011076-00	1	1	1	1	1	1		X
N	S9	10597082	SCREW	G01-011077-00	2	2	2	2	2	2		X
N	S10	10597083	SCREW	G01-011078-00	2	2	2	2	2	2		X
N	35	10597084	ANTENNA-DIVERSITY	G01-011079-00				1				C
N	35	10597085	ANTENNA-DUMMY	G01-011080-00	1	1	1		1	1		C
N	36	10597086	ANTENNA-DUAL	G01-011081-00	1	1	1	1	1	1		C
N	37	10597087	SPACER/CN	G01-011082-00	1	1	1	1	1	1		C
N	38	10597098	SHEET/FLASH	G01-011234-00			1	1				C
	39	10559973	TAPE-LARGE	G01-010243-00	1	1	1	1	1	1		X
N	S11	10597088	SCREW	G01-011123-00	2				2			X
N	40	10582195	LASER-MODULE	MDL-1500	1				1			A
N	41	10597089	HOLDER/LASER	G01-011127-00	1				1			C
N	42	10597021	FPC/LASER-MODULE	G01-011125-00	1				1			A
	43	10559974	TAPE-MIDDLE	G01-010244-00	1				1			X
N	44	10597090	BRACKET/LS-S	G01-011122-00	1				1			C
N	45	10597091	BRACKET/LS-L	G01-011126-00	1				1			C
N	S12	10597092	SCREW	G01-011116-00		2	2	2		2		X
N	46	10597097	PAD/2D-SCAN	G01-011119-00		1	1	1		1		C
N	47	10597022	2D-MODULE	G01-011117-00		1	1	1		1		A
N	48	10597023	FPC/2D-MODULE	G01-011118-00		1	1	1		1		A
N	49	10597094	BRACKET/2D-S	G01-011115-00		1	1	1		1		C
N	50	10597096	BRACKET/2D-L	G01-011121-00		1	1	1		1		C
N	S6	10597058	SCREW	G01-011113-00	1	1	1	1	1	1		X
N	S7	10597067	SCREW	G01-011090-00	2	2	2	2	2	2		X
N	51	10597024	SUB-BATTRY	G01-011110-00	1	1	1	1	1	1		C
N	52	10597099	HOLDER/SUB-BATTRY	G01-011111-00	1	1	1	1	1	1		C

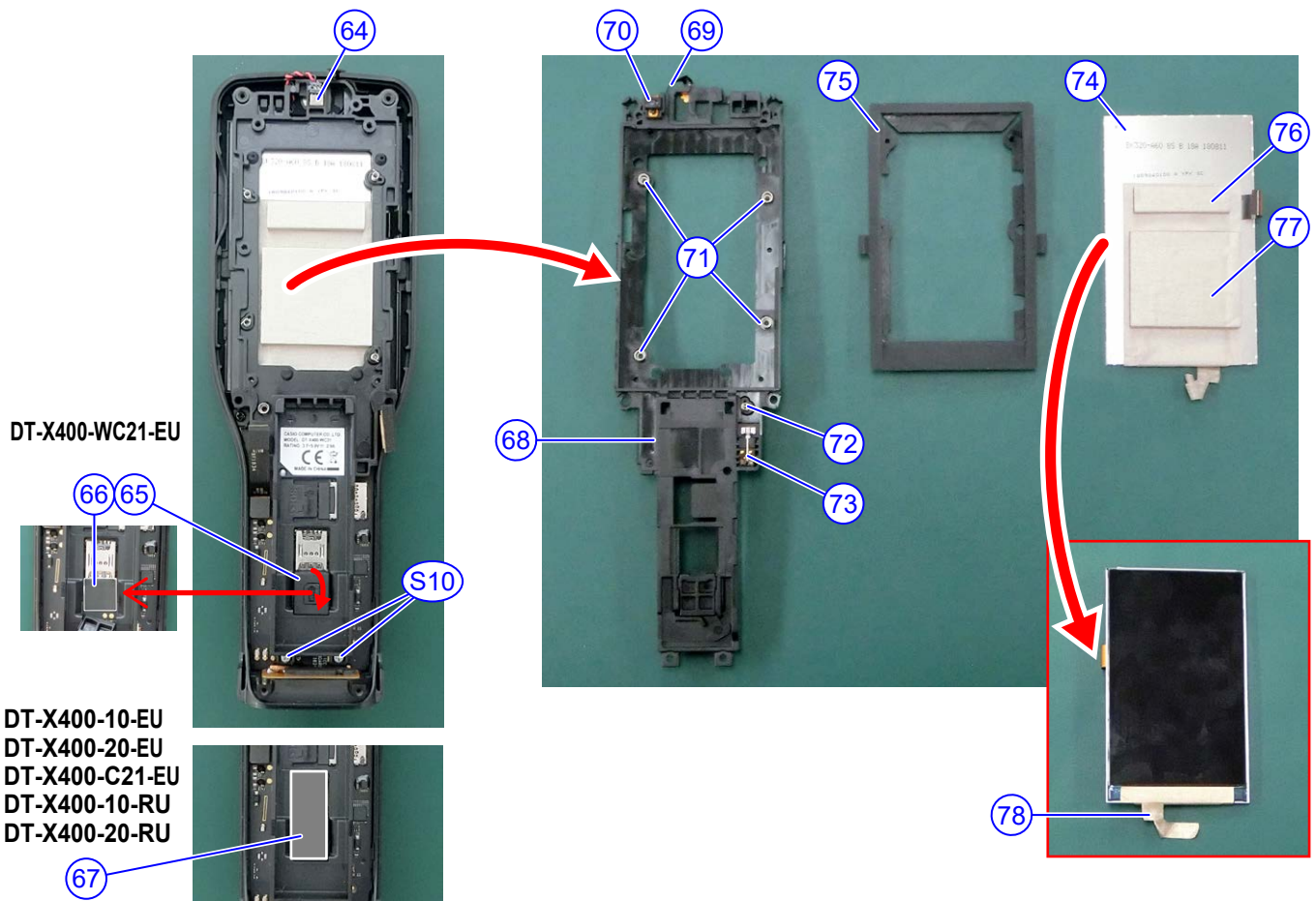
■ MAIN-ASSY



1: DT-X400-10-EU 2: DT-X400-20-EU 3: DT-X400-C21-EU 4: DT-X400-WC21-EU 5: DT-X400-10-RU 6: DT-X400-20-RU

N	Item	Code No.	Parts Name	Specification	Q'ty						Remarks	R
					1	2	3	4	5	6		
<b>MAIN-ASSY</b>												
N	53		PCB ASSY/MAIN		1	1						A
N	53		PCB ASSY/MAIN				1					A
N	53		PCB ASSY/MAIN					1				A
N	53		PCB ASSY/MAIN						1	1		A
N	S7	10597067	SCREW	G01-011090-00	3	3	3	3	3	3		X
N	54	10597028	FPC/MIC	G01-011084-00	1	1	1	1	1	1		B
N	55	10597029	FPC/LED	G01-011086-00			1	1				B
N	56	10597031	FPC/CAMERA	G01-011088-00			1	1				A
N	57	10597033	FPC/POWER	G01-011089-00	1	1	1	1	1	1		C
N	58	10597034	FPC/KEY	G01-011099-00	1	1	1	1	1	1		C
N	59	10597035	CABLE/ANNTENA	G01-011098-00				1				C
	60	10559973	TAPE-LARGE	G01-010243-00	1	1	1	1	1	1		X
	61	10559974	TAPE-MIDDLE	G01-010244-00	1	2	2	2	1	2		X
	62	10559975	TAPE-SMALL	G01-010245-00	1	1	1	1	1	1		X
N	63	10597100	TAPE-SPEAKER	G01-011083-00	1	1	1	1	1	1		X

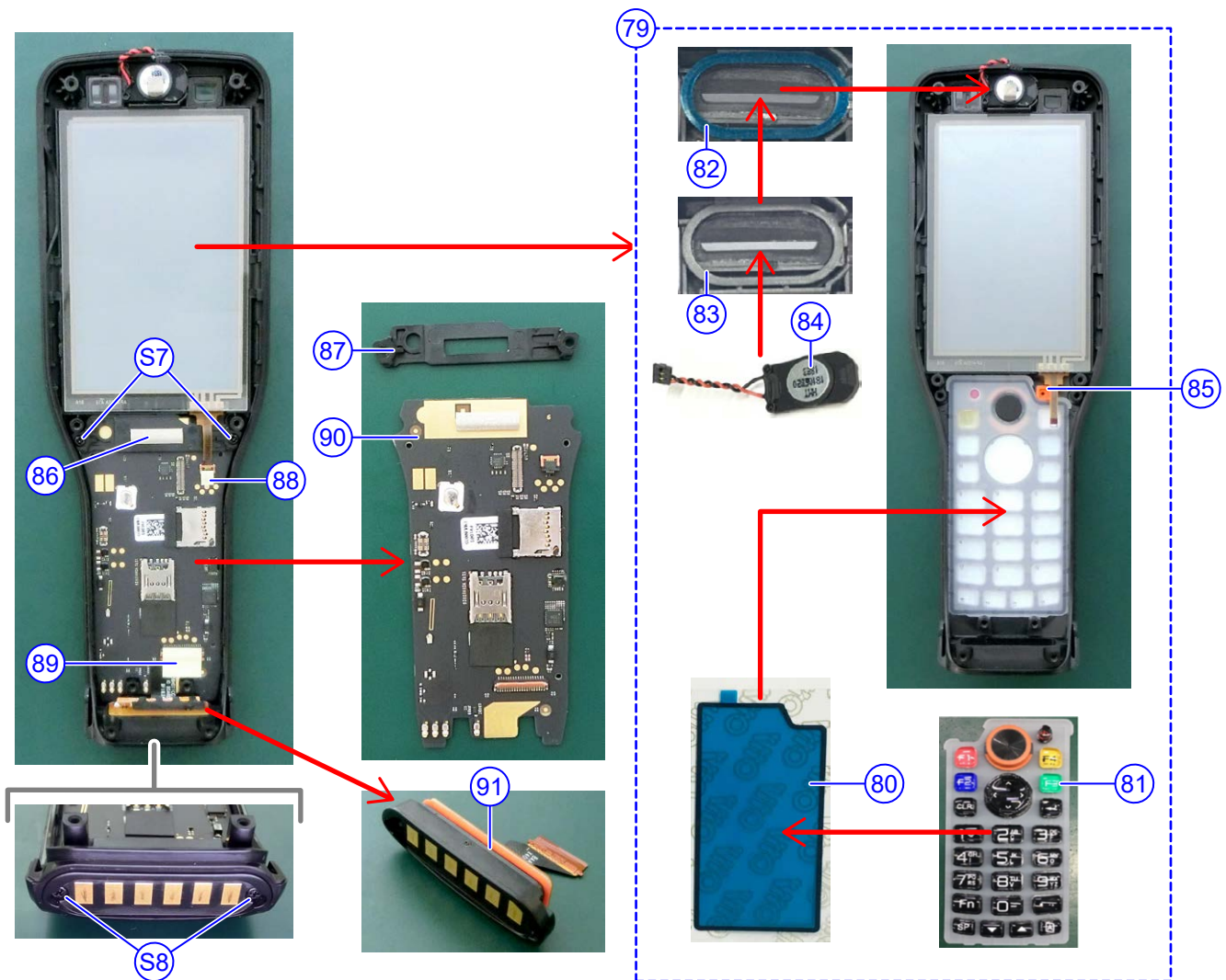
■ INNER-CASE



1: DT-X400-10-EU 2: DT-X400-20-EU 3: DT-X400-C21-EU 4: DT-X400-WC21-EU 5: DT-X400-10-RU 6: DT-X400-20-RU

N	Item	Code No.	Parts Name	Specification	Q'ty						Remarks	R
					1	2	3	4	5	6		
<b>INNER-CASE</b>												
N	64	10597102	GASKET/SPEAKER	G01-011097-00	1	1	1	1	1	1		X
N	65	10597103	STOPPER/CARD	G01-011130-00				1				X
N	66	10597104	SHEET/PET	G01-011073-00				1				X
N	67	10597105	SHEET/RUBBER	G01-011074-00	1	1	1		1	1		C
N	68	10597101	CASE/INNER	G01-011135-00	1	1	1	1	1	1		X
N	S10	10597083	SCREW	G01-011078-00	2	2	2	2	2	2		C
N	69	10597036	FPC/SENSOR	G01-011128-00	1	1	1	1	1	1		C
N	70	10597106	HOLDER/SENSOR	G01-011129-00	1	1	1	1	1	1		X
N	71	10597112	SPRING/LCD	G01-011136-00	4	4	4	4	4	4		X
N	72	10597113	SPRING/KEY	G01-011137-00	1	1	1	1	1	1		C
N	73	10597107	VIBRATOR	G01-011131-00	1	1	1	1	1	1		A
N	74	10597037	MODULE/LCD	G01-011132-00	1	1	1		1	1		A
N	74	10597038	MODULE/LCD	G01-011133-00				1				C
N	75	10597108	CUSHION/LCD	G01-011134-00	1	1	1	1	1	1		A
N	76	10597110	GASKET/LCD-S	G01-011138-00				1				A
N	77	10597111	GASKET/LCD-L	G01-011139-00				1				A
N	78	10597109	TAPE-EMI	G01-011236-00				1				A

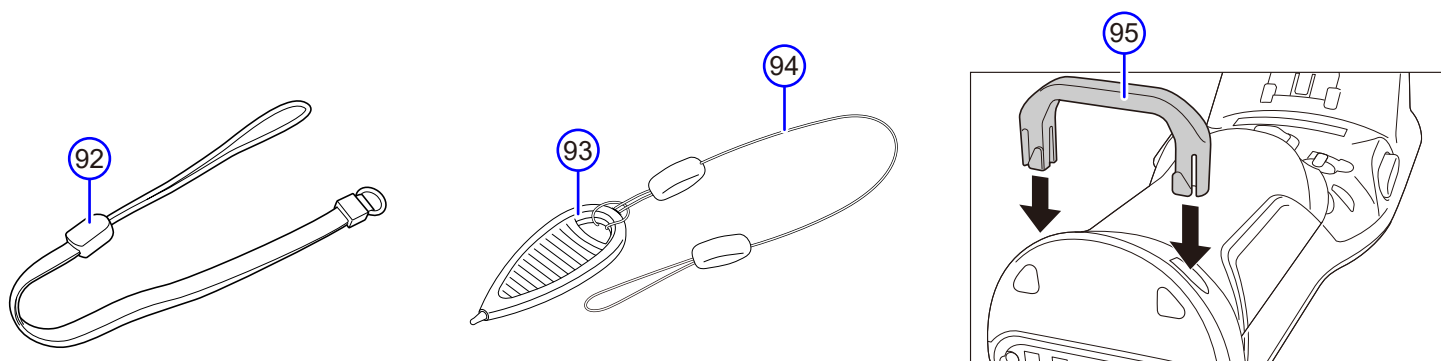
■ F-CASE



1: DT-X400-10-EU 2: DT-X400-20-EU 3: DT-X400-C21-EU 4: DT-X400-WC21-EU 5: DT-X400-10-RU 6: DT-X400-20-RU

N	Item	Code No.	Parts Name	Specification	Q'ty						Remarks	R
					1	2	3	4	5	6		
<b>F-CASE</b>												
N	79	10597039	CASE-ASSY/UPPER	G01-011107-00	1	1	1	1	1	1		C
N	80	10597114	D-TAPE/KEY	G01-011109-00	1	1	1	1	1	1		C
N	81	10597115	KEY-FRONT	G01-011108-00	1	1	1	1	1	1		C
N	82	10597116	CUSHION/SPEAKER	G01-011100-00	1	1	1	1	1	1		C
N	83	10597117	D-TAPE/SPEAKER	G01-011101-00	1	1	1	1	1	1		C
N	84	10597118	SPEAKER	G01-011102-00	1	1	1	1	1	1		C
N	85	10597119	HOLDER/MIC	G01-011106-00	1	1	1	1	1	1		C
N	86	10597121	GASKET/KEY	G01-011235-00				1				C
N	S7	10597067	SCREW	G01-011090-00	2	2	2	2	2	2		C
N	87	10597120	HOLDER/KEY	G01-011105-00	1	1	1	1	1	1		X
	88	10559975	TAPE-SMALL	G01-010245-00	1	1	1	1	1	1		X
	89	10559973	TAPE-LARGE	G01-010243-00	1	1	1	1	1	1		A
N	90	10597040	PCB ASSY/KEY	G01-011094-00	1	1	1		1	1		A
N	90	10597041	PCB ASSY/KEY	G01-011095-00				1				A
N	S8	10597068	SCREW	G01-011104-00	2	2	2	2	2	2		X
N	91	10597043	ASSY/IO	G01-011103-00	1	1	1	1	1	1		A

## ■ ACCESSORIES



N	Item	Code No.	Parts Name	Specification	Q'ty	Remarks	R
<b>ACCESSORIES</b>							
N	92	10597177	HAND STRAP	G01-011180-00	1		X
	93	10385355	PEN	RJC505313-001V01	1		X
N	94	10597178	PEN CODE	G01-011179-00	1		X
N	95	10597179	HAND BELT HOOK	G01-011181-00	1		X